

T 24S R 13E M. 111

LEGEND

○ = Corner having information on form 5680-2 in this file.

FILING INSTRUCTION

File 5680-2 card record by letter and number coordinates behind the file guide for the township in which it falls.

File the 5680-2 card record by letter and then by number i.e., all A cards first, then B cards etc.

The first card behind the file guide (if data have been obtained and recorded) will be card A-1 for N.W. Township Corner, then card A-2 for 1/16 corner then card A-3 for 1/4 corner etc.

*Legend contains 50 separate forms from MPB 3/60*

51	A	●			●			●											○				○		
52	B	+	+	+	+	+	+	+	+	+	+	+	+	+	+	+	+	+	+	+	+	+	+		
53	C	+	6	+		+	5	+		+	4	+		+	3	+		+	2	+		+	1		
54	D	+																							
55	E	●	⊗		⊗		⊗		⊗		⊗		⊗		⊗		⊗		⊗		⊗		⊗		
56	F	+	+	+	+	+	+	+	+	+	+	+	+	+	+	+	+	+	+	+	+	+	+		
57	G	●	+	7	+		+	8		⊗	+	9	+		+	10	+		+	11	+		+	12	●
58	H	+	+	+	+	+	+	+	+	+	+	+	+	+	+	+	+	+	+	+	+	+	+	+	
59	J	●			●		⊗		⊗		⊗		⊗		⊗		⊗		⊗		⊗		⊗	●	
60	K	+	+	+	+	+	+	+	+	+	+	+	+	+	+	+	+	+	+	+	+	+	+	+	
61	L	●	+	18	+		+	17		⊗	+	16	+		+	15	+		+	14	+		+	13	
62	M	+	+	+	+	+	+	+	+	+	+	+	+	+	+	+	+	+	+	+	+	+	+	+	
63	N	●			⊗		⊗		●		⊗		⊗		⊗		⊗		⊗		⊗		⊗	●	
64	O	+	+	+	+	+	+	+	+	+	+	+	+	+	+	+	+	+	+	+	+	+	+	+	
65	P	●	+	19	+		+	20		⊗	+	21	+		+	22	+		+	23	+		+	24	
66	Q	+	+	+	+	+	+	+	+	+	+	+	+	+	+	+	+	+	+	+	+	+	+	+	
67	R	●			⊗		⊗		⊗		⊗		⊗		⊗		⊗		⊗		⊗		⊗	●	
68	S	+	+	+	+	+	+	+	+	+	+	+	+	+	+	+	+	+	+	+	+	+	+	+	
69	T	+	30	+		+	29	+		+	28	+		+	27	+		+	26	+		+	25	+	
70	U	+	+	+	+	+	+	+	+	+	+	+	+	+	+	+	+	+	+	+	+	+	+	+	
71	V	+	+	+	+	+	+	+	+	+	+	+	+	+	+	+	+	+	+	+	+	+	+	+	
72	W	+	+	+	+	+	+	+	+	+	+	+	+	+	+	+	+	+	+	+	+	+	+	+	
73	X	+	31	+		+	32	+		⊗	+	33	+		⊗	+	34	+		●	+	○	+	36	+
74	Y	+	+	+	+	+	+	+	+	+	+	+	+	+	+	+	+	+	+	+	+	+	+	+	
75	Z	+			⊗																				

CORNER RECORD FILE GUIDE (Rectangular Surveys)

Index  
File No.

CORNER RECORD (SEARCH)

Tract or  
Survey No. \_\_\_\_\_  
Cor.  
No. A-1

T 24S. R. 13E.

R.D. Fort Rock County Lake

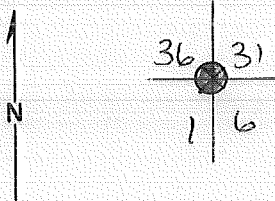
Sec Cov

Merid. Will

N.F. Deschutes State Oregon

CORNER DIAGRAM

DESCRIBE CORNER MONUMENT FOUND



SEE: Z-25, T23S, R12E, WM  
BLM Tablet 2

DESCRIBE BEARING TREES OR OTHER OFFICIAL ACCESSORIES FOUND

PHOTO IDENTIFICATION DATA

Photo No. \_\_\_\_\_  
Filed At. \_\_\_\_\_  
Object Ident. \_\_\_\_\_  
Ident. By \_\_\_\_\_  
*Signature* 7

DESCRIBE CORNER LOCATION RELATIVE TO NEAR-BY FEATURES, ALSO HOW TO REACH CORNER 3

PLANE COORDINATE POSITION DATA

State \_\_\_\_\_ Zone \_\_\_\_\_  
X \_\_\_\_\_  
Y \_\_\_\_\_  
Estab. By \_\_\_\_\_  
*Agency* 8

Signature  
D.S.

Title  
USFS

Division

Headquarters

Date  
1976

4  
7100-52  
REV. 65 5

CORNER RECORD (PERPETUATION)

MONUMENT: DESCRIBE NEW MONUMENT SET, OR WORK DONE TO PRESERVE EXISTING MONUMENT

9

ACCESSORIES DESCRIBE NEW BT'S WITNESS OBJECTS ETC. ESTABLISHED, OR WORK DONE TO PRESERVE EXISTING EVIDENCE

10

Work Done By \_\_\_\_\_ Title \_\_\_\_\_ Date \_\_\_\_\_ State Registration No. or Agency \_\_\_\_\_

Certified Cor. Record Prepared ? Yes No Filed At: \_\_\_\_\_ Date \_\_\_\_\_

11

REMARKS

12

Index File No. T. R. M. Tract or Surv. No. Cor. **A-1**

13

Index  
File No. A-5

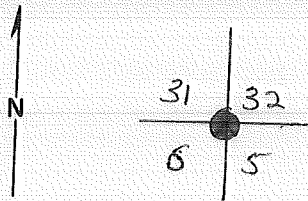
### CORNER RECORD (SEARCH)

T 24S., R. 13E.,  
Merid. Will

R.D. Fort Rock County Lake  
N.F. Deschutes State Oregon

Tract or  
Survey No. \_\_\_\_\_  
Cor.  
No. A-5  
Sec Cor \_\_\_\_\_

CORNER DIAGRAM



DESCRIBE CORNER MONUMENT FOUND

SEE = Z-S, T23S, R13E, W0M

DESCRIBE BEARING TREES OR OTHER OFFICIAL ACCESSORIES FOUND

6  
**PHOTO IDENTIFICATION DATA**

Photo No. \_\_\_\_\_  
Filed At. \_\_\_\_\_  
Object Ident. \_\_\_\_\_  
Ident. By \_\_\_\_\_

*Signature*

7  
**PLANE COORDINATE POSITION DATA**

State \_\_\_\_\_ Zone \_\_\_\_\_  
X \_\_\_\_\_  
Y \_\_\_\_\_  
Estab. By \_\_\_\_\_

*Agency*

Signature

Title

Division

Headquarters

Date

4  
7100-52

REV. 65 5

CORNER RECORD (PERPETUATION)

MONUMENT: DESCRIBE NEW MONUMENT SET, OR WORK DONE TO PRESERVE EXISTING MONUMENT

9

ACCESSORIES DESCRIBE NEW BT'S WITNESS OBJECTS ETC. ESTABLISHED, OR WORK DONE TO PRESERVE EXISTING EVIDENCE

10

Work Done By \_\_\_\_\_ Title \_\_\_\_\_ Date \_\_\_\_\_ State Registration No. or Agency \_\_\_\_\_

Certified Cor. Record Prepared ? Yes No Filed At: \_\_\_\_\_ Date \_\_\_\_\_

11

REMARKS

Index File No.

T.

R.

M.

Tract or Surv. No.

Cor. **A-5**

12

13

Index File No. A-9

### CORNER RECORD (SEARCH)

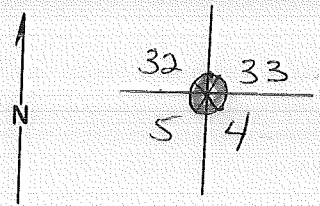
Tract or Survey No. \_\_\_\_\_ Cor. No. A-9

T 24S., R. 13E.  
Merid. Will

R.D. Fort Rock County Lake  
N.F. Deschutes State Oregon

Sec. Cor

#### CORNER DIAGRAM



#### DESCRIBE CORNER MONUMENT FOUND

SEE: 2-9, T23S, R13E, WM

#### DESCRIBE BEARING TREES OR OTHER OFFICIAL ACCESSORIES FOUND

#### PHOTO IDENTIFICATION DATA

Photo No. \_\_\_\_\_  
Filed At. \_\_\_\_\_  
Object Ident. \_\_\_\_\_  
Ident. By \_\_\_\_\_  
*Signature*

#### PLANE COORDINATE POSITION DATA

State \_\_\_\_\_ Zone \_\_\_\_\_  
X \_\_\_\_\_  
Y \_\_\_\_\_  
Estab. By \_\_\_\_\_  
*Agency*

#### DESCRIBE CORNER LOCATION RELATIVE TO NEAR-BY FEATURES, ALSO HOW TO REACH CORNER

Signature

Title

Division

Headquarters

Date

7100-52

REV. 65 5

CORNER RECORD (PERPETUATION)

MONUMENT: DESCRIBE NEW MONUMENT SET, OR WORK DONE TO PRESERVE EXISTING MONUMENT

9

ACCESSORIES DESCRIBE NEW BT'S WITNESS OBJECTS ETC. ESTABLISHED, OR WORK DONE TO PRESERVE EXISTING EVIDENCE

10

Work Done By \_\_\_\_\_ Title \_\_\_\_\_ Date \_\_\_\_\_ State Registration No. or Agency \_\_\_\_\_

Certified Cor. Record Prepared? Yes No Filed At: \_\_\_\_\_ Date \_\_\_\_\_

11

REMARKS

Index File No.

T.

R.

M.

Tract or Surv. No.

Cor.

A-9

12

13

index  
File No. \_\_\_\_\_  
T 24 S. R. 13 E. R.D. FORT ROCK County  
Merid. WILLAMETTE N.F. DESCHUTES State

CORNER RECORD (SEARCH)  
(Ref. FSM 7151.4)

Tract or  
Survey No. \_\_\_\_\_

Cor.  
No. A-21

SEC. COR.

SEE 2-21

T23S R13E

EV. FD



A-21

Index  
File No.

CORNER RECORD (SEARCH)

(Ref. FSM 7151.4)

Tract or  
Survey No.

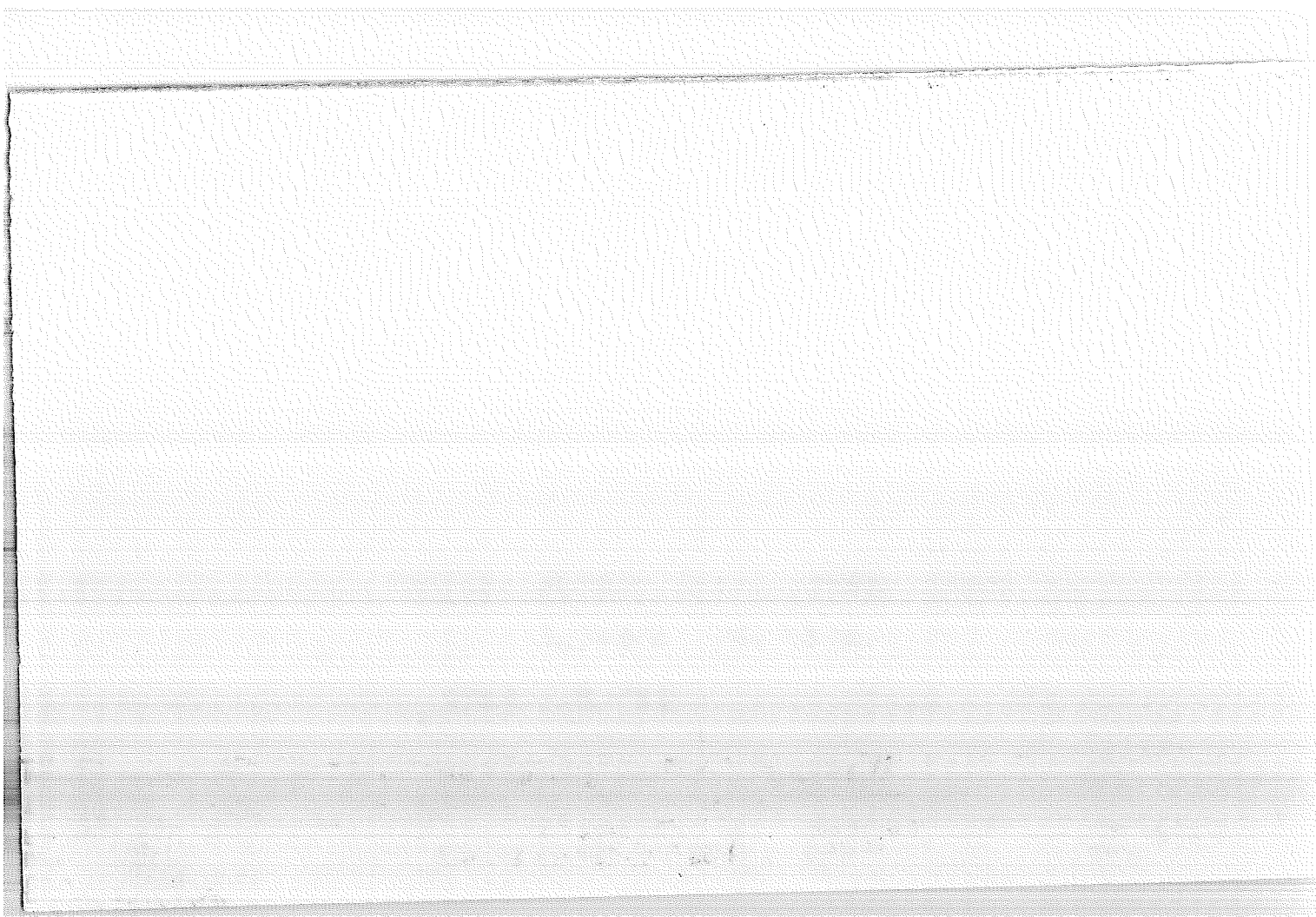
Cor.  
No.

T 24 S. R. 13 E. R.D. FORT ROCK County DESCHUTES  
Merid. WILLAMETTE N.F. DESCHUTES State OREGON A-25

SEE 2-25

T23S R13E

EV. FD.



Index File No. E-1

CORNER RECORD (SEARCH)

Tract or Survey No. \_\_\_\_\_ Cor. No. E-1

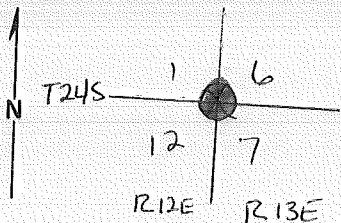
T 24S R. 13E

R.D. Fort Rock County Lake

Merid. Will

N.F. Deschutes State Oregon Sec Cor

CORNER DIAGRAM



DESCRIBE CORNER MONUMENT FOUND

SEE: E-25, T24S, R12E, WM  
BLM Tablet

DESCRIBE BEARING TREES OR OTHER OFFICIAL ACCESSORIES FOUND

DESCRIBE CORNER LOCATION RELATIVE TO NEAR-BY FEATURES, ALSO HOW TO REACH CORNER

PHOTO IDENTIFICATION DATA

Photo No. \_\_\_\_\_  
Filed At. \_\_\_\_\_  
Object Ident. \_\_\_\_\_  
Ident. By \_\_\_\_\_  
*Signature*

PLANE COORDINATE POSITION DATA

State \_\_\_\_\_ Zone \_\_\_\_\_  
X \_\_\_\_\_  
Y \_\_\_\_\_  
Estab. By \_\_\_\_\_  
*Agency*

Signature

Title

Division

Headquarters

Date

7100-52

REV. 65 5

CORNER RECORD (PERPETUATION)

MONUMENT : DESCRIBE NEW MONUMENT SET, OR WORK DONE TO PRESERVE EXISTING MONUMENT

9

ACCESSORIES : DESCRIBE NEW BT'S WITNESS OBJECTS ETC. ESTABLISHED, OR WORK DONE TO PRESERVE EXISTING EVIDENCE

10

Work Done By \_\_\_\_\_ Title \_\_\_\_\_ Date \_\_\_\_\_ State Registration No. or Agency \_\_\_\_\_

Certified Cor. Record Prepared ? Yes No Filed At: \_\_\_\_\_ Date \_\_\_\_\_

REMARKS

12

Index File No. T. R. M. Tract or Surv. No. Cor. **E-1**

13

# LAND CORNER RECORD

(Rectangular)

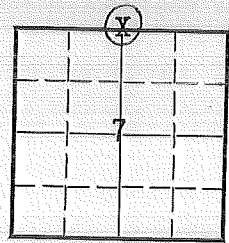
**E-3** 5680-2

1. T 24S R 13E No. E-3 Cor. 1/4 Mer. WM State Oregon N. F. Deschutes Dist. Fort Rock

2. Corner Status

3. Original Description \_\_\_\_\_ Vol. \_\_\_\_\_ Page 629 Where Recorded \_\_\_\_\_

4. Description of Corners: Set post for 1/4 Sec. Corner, from which:  
A pine 10" diam. bears N32°E 44 lks. dist.  
A pine 7" diam. bears S18°E 34 lks. dist.



5. Investigation Notes:  
Found: Wooden post 3"x3"x3 1/2' in good condition, marked 1/4S  
12" LPP (down) Brs. S04°E 15' from post, marked 1/4S BT

7. Photo Identification

Photo No. EGI 20-73 (6-21-59)

Ident. By: H. G. Little

8. Plane Coordinate Position Data

State \_\_\_\_\_ Zone \_\_\_\_\_

X \_\_\_\_\_

Y \_\_\_\_\_

Estab. By \_\_\_\_\_

Field Book No. \_\_\_\_\_

Where Filed \_\_\_\_\_

9. Evaluation

Authentic \_\_\_\_\_

Needs Verif. \_\_\_\_\_ Monument

Re-estab.  Survey \_\_\_\_\_

and Status \_\_\_\_\_

6. Signed H. G. Little Title Range Conserv. Date 12-11-63

# PERPETUATION RECORD

10. Monument:

11. Accessories

Field Book \_\_\_\_\_ Page \_\_\_\_\_

12. Set By \_\_\_\_\_ Title \_\_\_\_\_  
License \_\_\_\_\_ Agency \_\_\_\_\_ Date \_\_\_\_\_

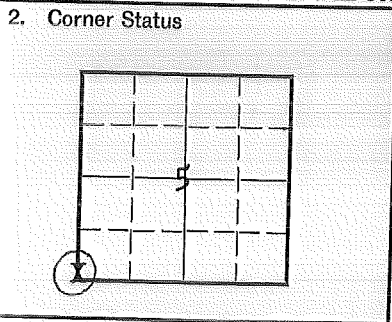
13. Recorded By \_\_\_\_\_ Volume \_\_\_\_\_ Page \_\_\_\_\_  
(Agency)  
\_\_\_\_\_  
(Date) (City) (County) (State)

14. Remarks:

LAND CORNER RECORD

**E-5** 5680-2

1. T 24S R 13E No. E-5 Cor. Sec Mer. Wm State Oregon (Rectangular)  
N. F. Deschutes Dist. Fort Rock



3. Original Description \_\_\_\_\_ Vol. \_\_\_\_\_ Page 627 Where Recorded \_\_\_\_\_

4. Description of Corners: Set post for cor. to Secs. 5,6,7 &8 from which:  
 A pine 22" diam. bears N66°E 84 lks. dist.  
 A pine 24" diam. bears N36°W 100 lks. dist.  
 A pine 28" diam. bears S77°W 51 lks. dist.  
 A pine 20" diam. bears S11°E 51 lks. dist.

5. Investigation Notes:  
 Found: No evidence of corner  
 P. Pine Brs. Marked S 6 BT

7. Photo Identification  
 Photo No. EGI 20-111(6-21-59)  
 Ident. By: H. G. Little

8. Plane Coordinate Position Data  
 State \_\_\_\_\_ Zone \_\_\_\_\_  
 X \_\_\_\_\_  
 Y \_\_\_\_\_  
 Estab. By \_\_\_\_\_  
 Field Book No. \_\_\_\_\_  
 Where Filed \_\_\_\_\_

9. Evaluation  
 Authentic \_\_\_\_\_  
 Needs Verif. \_\_\_\_\_ Monument X  
 Re-estab. X Survey \_\_\_\_\_  
 Land Status \_\_\_\_\_

6. Signed H. G. Little Title Range Conserv. Date 12-12-63



# PERPETUATION RECORD

10. Monument:

11. Accessories

		Field Book _____	Page _____
12. Set By _____ Title _____		13. Recorded By _____	Volume _____ Page _____
License _____ Agency _____ Date _____		(Agency)	
		(Date) _____ (City) _____	(County) _____ (State) _____

14. Remarks:

LAND CORNER RECORD

E-7 5680-2

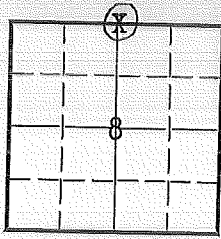
1. T. 24S R. 13E No. E-1 Cor. 1/4 Mer. Wm. State Oregon

(Rectangular)  
Oregon

N. F. Deschutes

Dist. Fort Rock

2. Corner Status



3. Original Description \_\_\_\_\_ Vol. \_\_\_\_\_ Page 628 \_\_\_\_\_ Where Recorded \_\_\_\_\_

4. Description of Corners: Set post for 1/4 sec. corner, from which:

A pine 26" diam. bears N25°E 36 lks. dist.

A pine 32" diam. bears S28°E 45 lks. dist.

5. Investigation Notes:

Found: No evidence of post, snow on ground.  
 28" pp snag Brs. N? feet - marked 1/4 S BT  
 32" pp Brs. S? feet - Blaze has grown over

7. Photo Identification

Photo No. EGI 20-111(6-21-59)

Ident. By: H. G. Little

8. Plane Coordinate Position Data

State \_\_\_\_\_ Zone \_\_\_\_\_

X \_\_\_\_\_

Y \_\_\_\_\_

Estab. By \_\_\_\_\_

Field Book No. \_\_\_\_\_

Where Filed \_\_\_\_\_

9. Evaluation

Authentic \_\_\_\_\_

Needs Verif. \_\_\_\_\_ Monument \_\_\_\_\_

Re-estab.  Survey \_\_\_\_\_

and Status \_\_\_\_\_

6. Signed H. G. Little Title Range Conserv. Date 12-12-63

# PERPETUATION RECORD

10. Monument:

11. Accessories

		Field Book _____	Page _____
12. Set By _____	Title _____	13. Recorded By _____	Volume _____
License _____	Agency _____	(Agency)	Page _____
Date _____		(Date) _____	(City) _____
		(County) _____	(State) _____

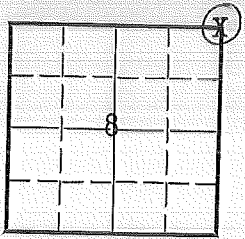
14. Remarks:

LAND CORNER RECORD

E-9 5680-2

1. T. 24S R. 13E No. E-9 Cor. Sec. Mer. Wm State Oregon N. F. Deschutes Dist. Fort Rock

2. Corner Status



3. Original Description Vol. Page 612 Where Recorded

4. Description of Corners: Set post for corner to Secs. 4, 5, 8 & 9, from which:
A pine 24" diam. bears N35°E 85 lks. dist.
A pine 22" diam. bears N30°W 66 lks. dist.
A pine 16" diam. bears S60°W 70 lks. dist.
A pine 30" diam. bears S 7°E 55 lks. dist.

5. Investigation Notes:

Found: No evidence of post
32" pp Blazed - cannot read
24" pp Marked S5
22" pp Marked S8 BT
32" pp Marked S9 BT

7. Photo Identification

Photo No. EGI 20-111(6-21-59)
Ident. By: H. G. Little

8. Plane Coordinate Position Data

State Zone
X
Y
Estab. By
Field Book No.
Where Filed

9. Evaluation

Authentic
Needs Verif. Monument X
Re-estab. X Survey
Land Status

6. Signed H. G. Little Title Range Conserv. Date 12-12-63

# PERPETUATION RECORD

10. Monument:

11. Accessories

		Field Book	Page			
12. Set By	Title	13. Recorded By	Volume	Page		
License	Agency	Date	(Agency)			
			(Date)	(City)	(County)	(State)

14. Remarks:

Index  
File No. E-13

**CORNER RECORD (SEARCH)**  
(Ref. FSM 7151.4)

Tract or  
Survey No. \_\_\_\_\_  
Cor. No. E-13

T. 245 R. 13 E

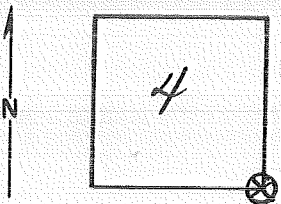
R.D. Fort Rock County Lake

Merid. Will

N.F. Daschutas State Ore Sec. Cor

CORNER DIAGRAM

DESCRIBE CORNER MONUMENT FOUND



DESCRIBE BEARING TREES OR OTHER OFFICIAL ACCESSORIES FOUND

Found 4 Bearing Trees & USFS Tags.  
N.E. & S.E. B.T.'s down & dead.  
N.W. & S.W. B.T.'s are in good conditions

PHOTO IDENTIFICATION DATA

Photo No. GS-VDOH  
Filed At. Menlo Park Ca.  
Object Ident. NE BT Picked  
Ident. By J.N. Tennant USGS  
10/77 Signature

DESCRIBE CORNER LOCATION RELATIVE TO NEAR-BY FEATURES, ALSO HOW TO REACH CORNER

PLANE COORDINATE POSITION DATA

State \_\_\_\_\_ Zone \_\_\_\_\_  
X \_\_\_\_\_  
Y \_\_\_\_\_  
Estab. By \_\_\_\_\_  
Agency

Signature

Title

Division

Headquarters

Date

7100-52-(3/68)

### CORNER RECORD (PERPETUATION)

MONUMENT : DESCRIBE NEW MONUMENT SET, OR WORK DONE TO PRESERVE EXISTING MONUMENT

ACCESSORIES : DESCRIBE NEW BT'S WITNESS OBJECTS ETC. ESTABLISHED, OR WORK DONE TO PRESERVE EXISTING EVIDENCE

Work Done By \_\_\_\_\_ Title \_\_\_\_\_ Date \_\_\_\_\_ State Registration No. or Agency \_\_\_\_\_

Certified Cor. Record Prepared ? Yes No Filed At: \_\_\_\_\_ Date \_\_\_\_\_

REMARKS

Index File No. T. R. M. Tract or Surv. No. Cor. **E-13** 13

LAND CORNER RECORD

(Rectangular)

G-1 5680-2

1. T. 24S R. 13E No. G-1 Cor. 1/4 Mer Will State Oregon N. F. Deschutes Dist. Fert. Reck

2. Corner Status

3. Original Description Vol. Page Where Recorded

4. Description of Corners:

5. Investigation Notes: Metal pester on <sup>38"</sup>~~7192~~ PP-South side. Bt-Sec. 12 PP. <sup>25"</sup>~~64"~~ Dia. Bearing N. 25° W. Dis. 15' Reck. 6" Above ground. Bt-Sec. 7 PP. <sup>38"</sup>~~612"~~ Dia. Bearing N. 20° E. Dis. 30'

6. Signed M.L.C Title Date 1959

7. Photo Identification

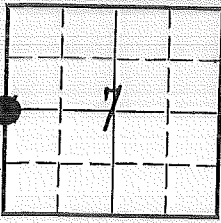
Photo No. Ident. By:

8. Plane Coordinate Position Data

State Zone X Y Estab. By Field Book No. Where Filed

9. Evaluation

Authentic Needs Verif. Monument Re-estab. Survey and Status





PERPETUATION RECORD

10. Monument:

11. Accessories

Field Book \_\_\_\_\_ Page \_\_\_\_\_

12. Set By \_\_\_\_\_ Title \_\_\_\_\_  
License \_\_\_\_\_ Agency \_\_\_\_\_ Date \_\_\_\_\_

13. Recorded By \_\_\_\_\_ (Agency) \_\_\_\_\_ Volume \_\_\_\_\_ Page \_\_\_\_\_  
(Date) (City) (County) (State)

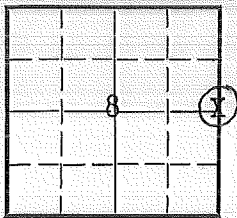
14. Remarks:

LAND CORNER RECORD

**6-9** 5680-2

1. T 24S R 13E No. G-9 Cor. 1/4 Mer. Wm State Oregon (Rectangular) N. F. Deschutes Dist. Fort Rock

2. Corner Status \_\_\_\_\_



3. Original Description \_\_\_\_\_ Vol. \_\_\_\_\_ Page 612 Where Recorded \_\_\_\_\_

4. Description of Corners: Set post for 1/4 Sec. Corner, from which:  
 A pine 20" in diam. bears N22°E 25 lks. dist.  
 A pine 24" in diam. bears S55°W 14 lks. dist.

5. Investigation Notes:  
 Found: No evidence of post  
 22" pp on east marked 1/4 S  
 30" pp on west blaze grown over

7. Photo Identification (8-3-59)  
 Photo No. EGI 54-163  
 Ident. By: H. G. Little

8. Plane Coordinate Position Data  
 State \_\_\_\_\_ Zone \_\_\_\_\_  
 X \_\_\_\_\_  
 Y \_\_\_\_\_  
 Etab. By \_\_\_\_\_  
 Field Book No. \_\_\_\_\_  
 Where Filed \_\_\_\_\_

9. Evaluation  
 Authentic \_\_\_\_\_  
 Needs Verif. \_\_\_\_\_ Monument X  
 Re-estab. X Survey \_\_\_\_\_  
 Land Status \_\_\_\_\_

6. Signed H. G. Little Title Range Conserv. Date 12-13-63

# PERPETUATION RECORD

10. Monument:

11. Accessories

12. Set By \_\_\_\_\_ Title \_\_\_\_\_  
License \_\_\_\_\_ Agency \_\_\_\_\_ Date \_\_\_\_\_

Field Book \_\_\_\_\_ Page \_\_\_\_\_  
13. Recorded By \_\_\_\_\_ Volume \_\_\_\_\_ Page \_\_\_\_\_  
(Agency)  
(Date) (City) (County) (State)

14. Remarks:

Index  
File No. G-25

**CORNER RECORD (SEARCH)**

(Ref. FSM 7151.4)

T 245 R. 13 & 14 E

Tract or  
Survey No. \_\_\_\_\_

Cor.  
No. G-25  
1/4 Cor.

Mer id. WILL.

R.D. Ft. Rock

County LAKE

N.F. DESCHUTES

State OREGON

**CORNER DIAGRAM**



**DESCRIBE CORNER MONUMENT FOUND**

AT ORIG.  $\frac{1}{4}$  COR. SECS 7 & 12 ON W. BDY.  
T 245 R 14 E, DET. FROM ORIG. BEARING & DIST.  
OF HENRY MELDRUM'S ORIG. 1880 B.T.'S  
BOTH HEALTHY.

**DESCRIBE BEARING TREES OR OTHER OFFICIAL ACCESSORIES FOUND**

A FORKED PINE, 37" DIAM., BEARS N 15° E  
57 LKS. DIST., WITH SCRIBE MK "4" VISIBLE  
ON PARTIALLY OPENED FACE OPENED BY ME.  
A PINE, 25" DIAM. BEARS N 32° W, 32 LKS  
DIST., MKD. WITH COMPLETELY HEALED BLAZE.

**DESCRIBE CORNER LOCATION RELATIVE TO NEAR-BY FEATURES, ALSO HOW TO REACH CORNER**

FOREST SERV. ROAD 2227  
Found Stone in good condition, 6" above ground.

BT's ① P.P. 2 ft. diam., Bears N 25° W, 15 ft. dist., Marked  $\frac{12}{8T}$   
② P.P. 3.1 ft. diam., Bears N 20° E, 30 ft. dist., marked  $\frac{sec}{8T}$

**PHOTO IDENTIFICATION DATA**

Photo No. \_\_\_\_\_  
Filed At \_\_\_\_\_  
Object Ident. \_\_\_\_\_  
Ident. By \_\_\_\_\_

Signature

**PLANE COORDINATE POSITION DATA**

State \_\_\_\_\_ Zone \_\_\_\_\_  
X \_\_\_\_\_  
Y \_\_\_\_\_  
Estab. By \_\_\_\_\_

Agency

Signature

DAN SANKWICH

Title

SURVEY TECH.

Division

Headquarters

Date

7/76

7100-52-(3/68)

CORNER RECORD (PERPETUATION)

MONUMENT: DESCRIBE NEW MONUMENT SET, OR WORK DONE TO PRESERVE EXISTING MONUMENT

AT COR. PT. SET A 2 1/2" X 28" IP, 24" IN GRND.

ACCESSORIES : DESCRIBE NEW BT's WITNESS OBJECTS ETC. ESTABLISHED, OR WORK DONE TO PRESERVE EXISTING EVIDENCE

BT TAGS POSTED

Work Done By JOE GARRISON Title B.L.M. Date 7/76 State Registration No. or Agency \_\_\_\_\_ Date \_\_\_\_\_

Certified Cor. Record Prepared? Yes  No  Filed At: \_\_\_\_\_

REMARKS

Index File No.

T.

R.

M.

Tract or Surv. No.

Cor.

6-25

12

13

Index File No. J-1

CORNER RECORD (SEARCH)

Tract or Survey No. \_\_\_\_\_

Cor. No. J-1

T 24S, R. 13E

R.D. Fort Rock

County Lake

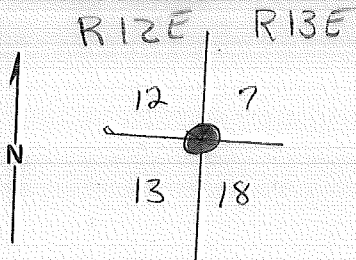
Sec Cor

Merid. Will

N.F. Deschutes

State Oregon

CORNER DIAGRAM



DESCRIBE CORNER MONUMENT FOUND

See: J-25, T 24S, R12E, WM

BC. set by BLM

DESCRIBE BEARING TREES OR OTHER OFFICIAL ACCESSORIES FOUND

PHOTO IDENTIFICATION DATA

Photo No. \_\_\_\_\_

Filed At. \_\_\_\_\_

Object Ident. \_\_\_\_\_

Ident. By \_\_\_\_\_

Signature \_\_\_\_\_

DESCRIBE CORNER LOCATION RELATIVE TO NEAR-BY FEATURES, ALSO HOW TO REACH CORNER

PLANE COORDINATE POSITION DATA

State \_\_\_\_\_ Zone \_\_\_\_\_

X \_\_\_\_\_

Y \_\_\_\_\_

Estab. By \_\_\_\_\_

Agency \_\_\_\_\_

Signature

D.S.

Title

Survey Tech.

Division

USFS

Headquarters

Date

11/76

7100-52

REV. 65 5

CORNER RECORD ( PERPETUATION )

MONUMENT : DESCRIBE NEW MONUMENT SET, OR WORK DONE TO PRESERVE EXISTING MONUMENT

ACCESSORIES DESCRIBE NEW BT'S WITNESS OBJECTS ETC. ESTABLISHED, OR WORK DONE TO PRESERVE EXISTING EVIDENCE

Work Done By \_\_\_\_\_ Title \_\_\_\_\_ Date \_\_\_\_\_ State Registration No. or Agency \_\_\_\_\_

Certified Cor. Record Prepared ? Yes No Filed At: \_\_\_\_\_ Date \_\_\_\_\_

REMARKS

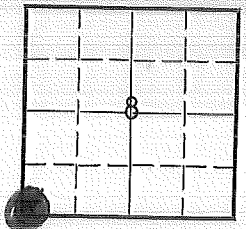
Index File No. T. R. M. Tract or Surv. No. Cor. **J-1**

LAND CORNER RECORD

5680-2

1. T 24S R 13E No. J-5 Cor. Sec Mer. Wm State Oregon (Rectangular) N. F. Deschutes Dist. Fort Rock

2. Corner Status



3. Original Description Vol. Page 624 Where Recorded

4. Description of Corners: Set post for corner to Secs. 7, 8, 17 & 18 from which:
A pine 40" in diam. bears S43°W 108 lks. dist.
A pine 6" in diam. bears S28°E 32 lks. dist.
A pine 18" in diam. bears N81°E 10 lks. dist.
A pine 24" in diam. bears N67°W 67 lks. dist.

5. Investigation Notes:
Found: mound of stone with 4"x4" pine post on mound of stone but no markings appear on post.

7. Photo Identification (6-21-59)

Photo No. EGI 20-109
Ident. By: H. G. Little

8. Plane Coordinate Position Data

State Zone
X
Y
Estab. By
Field Book No.
Where Filed

12" pp Brs. S24°E 18' from mound of stone marked S17
40" pp Brs. S50°W 66' from mound of stone
26" pp Brs. N60°W 45' from mound of stone (downed tree)

Found Original Stake + BLM Brass Cap.
3 New BT's plus SE BT is Orig.
SW BT is stump
NW BT is down + stump } Original

J. W. Tennant (10/77)
USGS
Line 2 - Exposure 234 GS-VDOH

9. Evaluation

Authentic
Needs Verif. Monument X
Re-estab. X Survey
Land Status

6. Signed H. G. Little Title Range Conserv. Date 12-16-63



# PERPETUATION RECORD

10. Monument:

11. Accessories

12. Set By _____ Title _____		Field Book _____	Page _____
License _____	Agency _____	Date _____	
13. Recorded By _____		Volume _____	Page _____
(Agency)			
(Date)	(City)	(County)	(State)

14. Remarks:

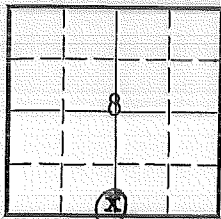
LAND CORNER RECORD

(Rectangular)

J-7 5680-2

1. T 24S R 13E No. J-7 Cor. 1/4 Mer. Wm. State Oregon N. F. Deschutes Dist. Fort Rock

2. Corner Status



3. Original Description \_\_\_\_\_ Vol. \_\_\_\_\_ Page 625 Where Recorded \_\_\_\_\_

4. Description of Corners: Set post for 1/4 Sec. Corner from which:  
 A pine 12" in diam. bears S18°E 39 lks. dist.  
 A pine 30" in diam. bears N54°E 59 lks. dist.

5. Investigation Notes:

Found: Wooden post 3"x3"x2½' lying on ground in poor condition marked 1/4S (on 2 sides)

Downed 30" pp Brs. N52°E 36' from post  
 Downed rotten pp Brs. S16°E 30' from post

7. Photo Identification  
 Photo No. EGI 20-109  
 Ident. By: H. G. Little

8. Plane Coordinate Position Data  
 State \_\_\_\_\_ Zone \_\_\_\_\_  
 X \_\_\_\_\_  
 Y \_\_\_\_\_  
 Estab. By \_\_\_\_\_  
 Field Book No. \_\_\_\_\_  
 Where Filed \_\_\_\_\_

9. Evaluation  
 Authentic \_\_\_\_\_  
 Needs Verif. \_\_\_\_\_ Monument X  
 Re-estab. X Survey \_\_\_\_\_  
 Land Status \_\_\_\_\_

6. Signed H. G. Little Title Range Conserv. Date 12-16-63

# PERPETUATION RECORD

10. Monument:

11. Accessories

		Field Book	Page			
12. Set By	Title	13. Recorded By	Volume	Page		
License	Agency	Date	(Agency)			
			(Date)	(City)	(County)	(State)

14. Remarks:

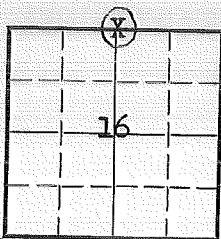
LAND CORNER RECORD

(Rectangular)

J-11 5680-2

1. T 24S R 13E No. J-11 Cor. 1/4 Mer. Wm. State Oregon N. F. Deschutes Dist. Fort Rock

2. Corner Status



3. Original Description \_\_\_\_\_ Vol. \_\_\_\_\_ Page 611 Where Recorded \_\_\_\_\_

4. Description of Corners: Set post for 1/4 sec. corner from which:  
 A pine 24" diam. bears S67°W 20 lks. dist.  
 A pine 18" diam. bears North 4 lks. dist.

5. Investigation Notes:

Found: Wooden post 3"x3"x3 1/2' lying on ground in fair condition, no markings evident.

30" pp Brs. S48°W 9' from post (cannot read)  
 24" pp Brs. N42°E 6' from post (cannot read)

These B.T.'s have been burned.

7. Photo Identification

Photo No. EGI 21-28  
 Ident. By: H. G. Little

8. Plane Coordinate Position Data

State \_\_\_\_\_ Zone \_\_\_\_\_  
 X \_\_\_\_\_  
 Y \_\_\_\_\_  
 Estab. By \_\_\_\_\_  
 Field Book No. \_\_\_\_\_  
 Where Filed \_\_\_\_\_

9. Evaluation

Authentic \_\_\_\_\_  
 Needs Verif. \_\_\_\_\_ Monument X  
 Re-estab. X Survey \_\_\_\_\_  
 Land Status \_\_\_\_\_

6. Signed H. G. Little Title Range Conser. Date 12-17-63

# PERPETUATION RECORD

10. Monument:

11. Accessories

12. Set By _____ Title _____	Field Book _____ Page _____
License _____ Agency _____ Date _____	13. Recorded By _____ (Agency) _____ Volume _____ Page _____
	_____ (Date) (City) (County) (State)

14. Remarks:

J-11

Index File No. J-17

CORNER RECORD (SEARCH)

(Ref. FSM 7151.4)

Tract or Survey No. \_\_\_\_\_

Cor. No. J-17

T 24S R. 13E

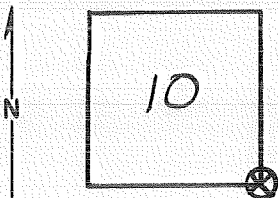
R.D. Fort Rock County Lake

Sec. 5 Cor. 1

Merid. Will

N.F. Deschutes State Ore

CORNER DIAGRAM



DESCRIBE CORNER MONUMENT FOUND

DESCRIBE BEARING TREES OR OTHER OFFICIAL ACCESSORIES FOUND

Found 3 Bearing Trees with USFS Tags;  
The N.E. Tree not recovered,  
The N.W. Tree is down & dead.  
(Line 2 - exposure 204)

PHOTO IDENTIFICATION DATA

Photo No. GS-VDOH

Filed At. Menlo Park, Ca

Object Ident. Sketch

Ident. By J.N. Tennant USGS

10/77 Signature

PLANE COORDINATE POSITION DATA

State \_\_\_\_\_ Zone \_\_\_\_\_

X \_\_\_\_\_

Y \_\_\_\_\_

Estab. By \_\_\_\_\_

Agency

Signature

Title

Division

Headquarters

Date

7100-52-(3/68)

CORNER RECORD (PERPETUATION)

MONUMENT : DESCRIBE NEW MONUMENT SET, OR WORK DONE TO PRESERVE EXISTING MONUMENT

9

ACCESSORIES : DESCRIBE NEW BT'S WITNESS OBJECTS ETC. ESTABLISHED, OR WORK DONE TO PRESERVE EXISTING EVIDENCE

10

Work Done By \_\_\_\_\_ Title \_\_\_\_\_ Date \_\_\_\_\_ State Registration No. or Agency \_\_\_\_\_

Certified Cor. Record Prepared ? Yes No Filed At: \_\_\_\_\_ Date \_\_\_\_\_

11

REMARKS

Index File No. T. R. M. Tract or Surv. No.

Cor. **J-17** 12  
13

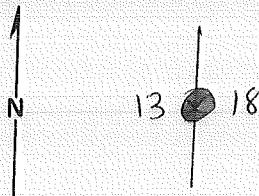
Index  
File No. L-1

### CORNER RECORD (SEARCH)

Tract or  
Survey No. \_\_\_\_\_  
Cor.  
No. L-1

T T24S. R. 13E. R.D. Fort Rock County Lake  
Merid. Will N.F. Deschutes State Oregon 1/4 Cor

#### CORNER DIAGRAM



#### DESCRIBE CORNER MONUMENT FOUND

SEE : L-25, T24S, R12E, WM

BLM BC

#### DESCRIBE BEARING TREES OR OTHER OFFICIAL ACCESSORIES FOUND

~~EV. FD.~~

#### PHOTO IDENTIFICATION DATA

Photo No. \_\_\_\_\_  
Filed At. \_\_\_\_\_  
Object Ident. \_\_\_\_\_  
Ident. By \_\_\_\_\_

Signature

#### PLANE COORDINATE POSITION DATA

State \_\_\_\_\_ Zone \_\_\_\_\_  
X \_\_\_\_\_  
Y \_\_\_\_\_  
Estab. By \_\_\_\_\_  
Agency

Signature

D.S

Title

Survey Tech

Division

Headquarters

USFS

Date

11/76

7100-52

REV. 65

4

5



CORNER RECORD (PERPETUATION)

MONUMENT : DESCRIBE NEW MONUMENT SET, OR WORK DONE TO PRESERVE EXISTING MONUMENT

9

ACCESSORIES DESCRIBE NEW BT'S WITNESS OBJECTS ETC. ESTABLISHED, OR WORK DONE TO PRESERVE EXISTING EVIDENCE

10

Work Done By. \_\_\_\_\_ Title \_\_\_\_\_ Date \_\_\_\_\_ State Registration No. or Agency \_\_\_\_\_

Certified Cor. Record Prepared ? Yes No Filed At: \_\_\_\_\_ Date \_\_\_\_\_

11

REMARKS

Index File No. T. R. M. Tract or Surv. No. Cor. **L-1**

12

13

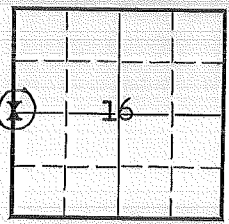
LAND CORNER RECORD

(Rectangular)

L-9 5680-2

1. T 24S R 13E No. L-9 Cor. 1/4 Mer. Wm State Oregon N. F. Deschutes Dist. Fort Rock

2. Corner Status



3. Original Description \_\_\_\_\_ Vol. \_\_\_\_\_ Page 610 Where Recorded \_\_\_\_\_

4. Description of Corners: Set basalt stone 12"x12"x10" in mound of stone for 1/4 Sec. Cor. from which:  
A pine 18" in diam. bears N54°E 32 lks. dist.

5. Investigation Notes:

Found: Wooden post 3"x3"x5' set in mound of stone, in fair condition marked S16-1/4S-S17-1/4S

14" pp Brs. N56°E 19' (cannot read)

7. Photo Identification

Photo No. EGI 20-109

Ident. By: H. G. Little

8. Plane Coordinate Position Data

State \_\_\_\_\_ Zone \_\_\_\_\_

X \_\_\_\_\_

Y \_\_\_\_\_

Estab. By \_\_\_\_\_

Field Book No. \_\_\_\_\_

Where Filed \_\_\_\_\_

9. Evaluation

Authentic \_\_\_\_\_

Needs Verif.  Monument

Re-estab. \_\_\_\_\_ Survey \_\_\_\_\_

Land Status \_\_\_\_\_

6. Signed H. G. Little Title Range Conserv. Date 12-16-63

PERPETUATION RECORD

10. Monument:

11. Accessories

		Field Book _____	Page _____
12. Set By _____	Title _____	13. Recorded By _____	Volume _____
License _____	Agency _____	(Agency)	Page _____
Date _____		(Date) _____	(City) _____
		(County) _____	(State) _____

14. Remarks:

Index  
File No. N-1

CORNER RECORD (SEARCH)

Tract or  
Survey No. \_\_\_\_\_  
Cor.  
No. N-1

T 24S, R. 13E

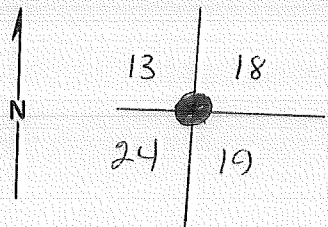
R.D. Fort Rock County Lake

Sec-Cor

Merid. Will

N.F. Deschutes State Oregon

CORNER DIAGRAM



DESCRIBE CORNER MONUMENT FOUND

SEE: N-25, T24S, R12E

BLM BC

~~EV.FD.~~

DESCRIBE BEARING TREES OR OTHER OFFICIAL ACCESSORIES FOUND

DESCRIBE CORNER LOCATION RELATIVE TO NEAR-BY FEATURES, ALSO HOW TO REACH CORNER

PHOTO IDENTIFICATION DATA

Photo No. \_\_\_\_\_  
Filed At. \_\_\_\_\_  
Object Ident. \_\_\_\_\_  
Ident. By \_\_\_\_\_  
*Signature*

PLANE COORDINATE POSITION DATA

State \_\_\_\_\_ Zone \_\_\_\_\_  
X \_\_\_\_\_  
Y \_\_\_\_\_  
Estab. By \_\_\_\_\_  
*Agency*

Signature

D.S.

Title

Survey Tech

Division

Headquarters

USFS

Date

11/76

7100-52

REV. 65 5

CORNER RECORD (PERPETUATION)

MONUMENT: DESCRIBE NEW MONUMENT SET, OR WORK DONE TO PRESERVE EXISTING MONUMENT

9

ACCESSORIES DESCRIBE NEW BT'S WITNESS OBJECTS ETC. ESTABLISHED, OR WORK DONE TO PRESERVE EXISTING EVIDENCE

10

Work Done By \_\_\_\_\_ Title \_\_\_\_\_ Date \_\_\_\_\_ State Registration No. or Agency \_\_\_\_\_

Certified Cor. Record Prepared? Yes No Filed At: \_\_\_\_\_ Date \_\_\_\_\_

11

REMARKS

12

Index File No. T. R. M. Tract or Surv. No. Cor. **N-1**

13

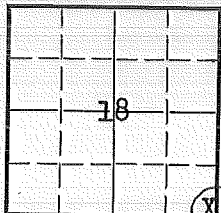
LAND CORNER RECORD

N-5 5680-2

(Rectangular)

1. T 24S R 13E No. N-5 Cor. Sec. Mer. Wm State Oregon N. F. Deschutes Dist. Fort Rock

2. Corner Status



3. Original Description \_\_\_\_\_ Vol. \_\_\_\_\_ Page 621 Where Recorded \_\_\_\_\_

4. Description of Corners: Set post for corner to Secs. 17,18,19 &20 from which  
 A pine 24" diam. bears S14°E 90 lks. dist.  
 A pine 70" diam. bears N55°E 35 lks. dist.  
 A pine 30" diam. bears N10°W 18 lks. dist.  
 A pine 24" diam. bears S34°W 23 lks. dist.

5. Investigation Notes:

Found: Wooden post 3"x3"x3' lying on ground in fair condition, marked S17-S20 R13E-S19 T24S-S18

27" pp Brs. N49°E 20' from post - cannot read  
 20" pp Brs. N22°W 14' from post - marked S18  
 24" pp Brs. S09°E 45' from post - marked S20  
 22" stump Brs. S54°W 14' from post - marked S19

7. Photo Identification

Photo No. EGI 20-107(6-21-59)  
 Ident. By: H. G. Little

8. Plane Coordinate Position Data

State \_\_\_\_\_ Zone \_\_\_\_\_

X \_\_\_\_\_

Y \_\_\_\_\_

Estab. By \_\_\_\_\_

Field Book No. \_\_\_\_\_

Where Filed \_\_\_\_\_

9. Evaluation

Authentic \_\_\_\_\_

Needs Verif. \_\_\_\_\_ Monument

Re-estab.  Survey \_\_\_\_\_

Land Status \_\_\_\_\_

6. Signed H. G. Little Title Range Conserv. Date 12-16-63

PERPETUATION RECORD

10. Monument:

11. Accessories

Field Book \_\_\_\_\_ Page \_\_\_\_\_

12. Set By \_\_\_\_\_ Title \_\_\_\_\_  
License \_\_\_\_\_ Agency \_\_\_\_\_ Date \_\_\_\_\_

13. Recorded By \_\_\_\_\_ (Agency) \_\_\_\_\_ Volume \_\_\_\_\_ Page \_\_\_\_\_  
(Date) (City) (County) (State)

14. Remarks:

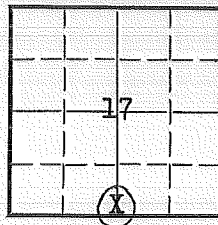
LAND CORNER RECORD

(Rectangular)

N-7 5680-2

1. T 24S R 13E No. N-7 Cor. 1/4 Mer. Wm. State Oregon N. F. Deschutes Dist. Fort Rock

2. Corner Status



3. Original Description \_\_\_\_\_ Vol. \_\_\_\_\_ Page \_\_\_\_\_ Where Recorded \_\_\_\_\_

4. Description of Corners: Set post for 1/4 Sec. corner from which:  
 A pine 18" in diam. bears N18°W 42 lks. dist.  
 A pine 24" in diam. bears S4°E 59 lks. dist.

5. Investigation Notes:

Found: Wooden post 3"x3"x4" in good condition marked 1/4S-S20-1/4S-S17

20" pp Brs. N7°W 27' marked 1/4S

7. Photo Identification

Photo No. EGI-20-107  
 Ident. By: H. G. Little

8. Plane Coordinate Position Data

State \_\_\_\_\_ Zone \_\_\_\_\_  
 X \_\_\_\_\_  
 Y \_\_\_\_\_  
 Estab. By \_\_\_\_\_  
 Field Book No. \_\_\_\_\_  
 Where Filed \_\_\_\_\_

9. Evaluation

Authentic \_\_\_\_\_  
 Needs Verif. \_\_\_\_\_ Monument   
 Re-estab.  Survey \_\_\_\_\_  
 Land Status \_\_\_\_\_

6. Signed H. G. Little Title Range Conserv. Date 12-17-63



PERPETUATION RECORD

10. Monument:

11. Accessories

Field Book \_\_\_\_\_ Page \_\_\_\_\_

12. Set By \_\_\_\_\_ Title \_\_\_\_\_

License \_\_\_\_\_ Agency \_\_\_\_\_ Date \_\_\_\_\_

13. Recorded By \_\_\_\_\_ Volume \_\_\_\_\_ Page \_\_\_\_\_  
(Agency)

(Date) (City) (County) (State)

14. Remarks:

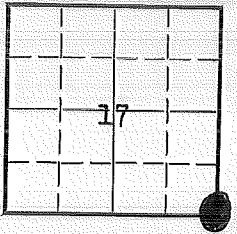
LAND CORNER RECORD

N-9 5680-2

1. T 24S R 13E No. 11-9 Cor. Sec Mer. Tm State Oregon N. F. Deschutes

Dist. Fort Rock

2. Corner Status



3. Original Description Vol. Page Where Recorded

4. Description of Corners: Set basalt stone 12x10x10 in. mound of stone for corner to Secs. 16,17,20,&21 from which:

- A pine 18" in diam. bears N31°E 19 lks. dist.
- A pine 18" in diam. bears S74°W 44 lks. dist.

5. Investigation Notes:

Found: Wooden post 3"x3 1/2"x3 1/2' in good condition marked S17-S16-S21-R13E-S20-T24S

- 14" pp Brs. N32°E 13' (cannot read)
- 14" pp Brs. N82°E 15' (cannot read)
- 18" pp Brs. S77°W 30' marked S20

7. Photo Identification

Photo No. EGI-20-107  
Ident. By: H. G. Little

8. Plane Coordinate Position Data

State \_\_\_\_\_ Zone \_\_\_\_\_  
X \_\_\_\_\_  
Y \_\_\_\_\_  
Estab. By \_\_\_\_\_  
Field Book No. \_\_\_\_\_  
Where Filed \_\_\_\_\_

BLM Remonumented:

Found by J. N. Tennant USGS 11/77  
By Photo Identification G5-YDOH; Line 2 Exposure 235  
Filed in Menlo Park, Cal.

BLM Cap + Square Post  
4 Bearing Trees  
2 are Originals

9. Evaluation

Authentic \_\_\_\_\_  
Needs Verif. \_\_\_\_\_ Monument   
Re-estab.  Survey \_\_\_\_\_  
Land Status \_\_\_\_\_

6. Signed H. G. Little Title Range Conserv. Date 12-17-63

# PERPETUATION RECORD

10. Monument:

11. Accessories

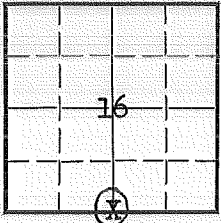
		Field Book _____	Page _____
12. Set By _____	Title _____	13. Recorded By _____	Volume _____
License _____	Agency _____	(Agency)	Page _____
Date _____		(Date) _____	(City) _____
		(County) _____	(State) _____

14. Remarks:

LAND CORNER RECORD

1. T 24S R 13E No. N-11 Cor. 1/4 Mer. Wm. State Oregon (Rectangular) N. F. Deschutes Dist. Fort Rock

2. Corner Status



3. Original Description Vol. Page Where Recorded

4. Description of Corners: Set post for 1/4 sec. corner from which:  
A pine 30" in diam. bears S 14°E 48 lks. dist.  
A pine 20" in diam. bears N 49°W 38 lks. dist.

5. Investigation Notes:  
Found: Wooden post 3"x3"x4' lying on ground in very poor condition.  
post is rotten and cannot read any markings.

7. Photo Identification  
Photo No. EGI 21-28  
Ident. By: H. G. Little

14" pp snag Brs. N32°W 15' from post

8. Plane Coordinate Position Data  
State \_\_\_\_\_ Zone \_\_\_\_\_  
X \_\_\_\_\_  
Y \_\_\_\_\_  
Estab. By \_\_\_\_\_  
Field Book No. \_\_\_\_\_  
Where Filed \_\_\_\_\_

9. Evaluation  
Authentic \_\_\_\_\_  
Needs Verif. \_\_\_\_\_ Monument X  
Re-estab. X Survey \_\_\_\_\_  
Land Status \_\_\_\_\_

6. Signed H. G. Little Title Range Conser. Date 12-17-63

# PERPETUATION RECORD

10. Monument:

11. Accessories

		Field Book _____	Page _____
12. Set By _____	Title _____	13. Recorded By _____	Volume _____
License _____	Agency _____	(Agency)	Page _____
Date _____		(Date) _____	(City) _____
		(County) _____	(State) _____

14. Remarks:

USDA-FOREST SERVICE

Index

File No.

T 24 S. R. 13 E. R.D. Ft. Rock

CORNER RECORD (SEARCH)

(Ref. FSM 7151.4)

Tract or Survey No. \_\_\_\_\_

Cor. No. N-13

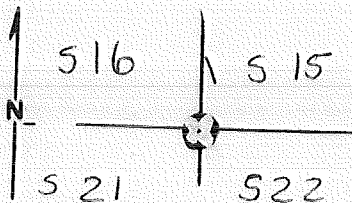
Merid. WILLAMETTE

N.F. DESCHUTES

County Deschutes

State OREGON

CORNER DIAGRAM



DESCRIBE CORNER MONUMENT FOUND

Square Post

DESCRIBE BEARING TREES OR OTHER OFFICIAL ACCESSORIES FOUND

1 Bearing Tree (N.E) USFS tag

PHOTO IDENTIFICATION DATA

Photo No. GS-V DOH

Filed At. Mendo Park, CA.

Object Ident. \_\_\_\_\_

Ident. By J.N. Tennant USGS

*Signature*

Line 2; Exposure 202

DESCRIBE CORNER LOCATION RELATIVE TO NEAR-BY FEATURES, ALSO HOW TO REACH CORNER

PLANE COORDINATE POSITION DATA

State \_\_\_\_\_ Zone \_\_\_\_\_

X \_\_\_\_\_

Y \_\_\_\_\_

Estab. By \_\_\_\_\_

*Agency*

*Signature*

Title

Division

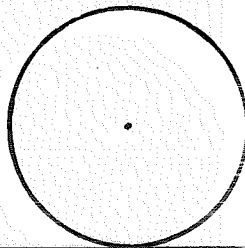
Headquarters

Date

D-7100-52 (10/78)

CORNER RECORD (PERPETUATION)

MONUMENT: DESCRIBE NEW MONUMENT SET, OR WORK DONE TO PRESERVE EXISTING MONUMENT



ACCESSORIES DESCRIBE NEW BT'S WITNESS OBJECTS ETC. ESTABLISHED, OR WORK DONE TO PRESERVE EXISTING EVIDENCE

Work Done By \_\_\_\_\_ Title \_\_\_\_\_ Date \_\_\_\_\_ State Registration No. or Agency \_\_\_\_\_

Certified Cor. Record Prepared? Yes No Filed At: \_\_\_\_\_ Date \_\_\_\_\_

REMARKS

Index File No.

T.

S., R.

E., W.M.

Tract or Surv. No.

Cor. N-13

USDA-FOREST SERVICE

Index

File No. \_\_\_\_\_

CORNER RECORD (SEARCH)

(Ref. FSM 7151.4)

Tract or Survey No. \_\_\_\_\_

Cor. No. N-17

T S. R. E. R.D. \_\_\_\_\_

County \_\_\_\_\_

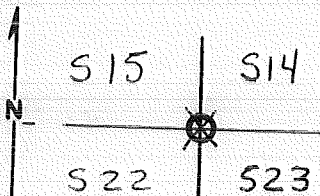
Merid. WILLAMETTE

N.F. DESCHUTES

State OREGON

CORNER DIAGRAM

DESCRIBE CORNER MONUMENT FOUND



DESCRIBE BEARING TREES OR OTHER OFFICIAL ACCESSORIES FOUND

SE + NE Bearing Trees Recovered USFS Tags

PHOTO IDENTIFICATION DATA

Photo No. GS-VDOH

Filed At. Mendo Park, CA.

Object Ident. NE. BT.

Ident. By J.N. Tennant USGS.

Signature

Line 2, Exposure 202

DESCRIBE CORNER LOCATION RELATIVE TO NEAR-BY FEATURES, ALSO HOW TO REACH CORNER

PLANE COORDINATE POSITION DATA

State \_\_\_\_\_ Zone \_\_\_\_\_

X \_\_\_\_\_

Y \_\_\_\_\_

Estab. By \_\_\_\_\_

Agency

Signature

Title

Division

Headquarters

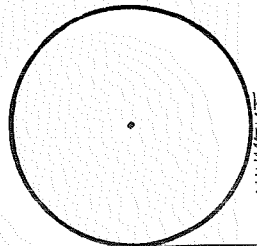
Date

D-7100-52 (10/78)



# CORNER RECORD (PERPETUATION)

MONUMENT: DESCRIBE NEW MONUMENT SET, OR WORK DONE TO PRESERVE EXISTING MONUMENT



ACCESSORIES DESCRIBE NEW BT's WITNESS OBJECTS ETC. ESTABLISHED, OR WORK DONE TO PRESERVE EXISTING EVIDENCE

Work Done By \_\_\_\_\_ Title \_\_\_\_\_ Date \_\_\_\_\_ State Registration No. or Agency \_\_\_\_\_

Certified Cor. Record Prepared? Yes No Filed At: \_\_\_\_\_ Date \_\_\_\_\_

REMARKS

Index File No.

T.

S., R.

E., W.M.

Tract or Surv. No.

Cor. **N-17**

USDA-FOREST SERVICE

Index  
File No. 2563

CORNER RECORD (SEARCH)

(Ref. FSM 7151.4)

Contract or  
Survey No. \_\_\_\_\_

Cor.  
No. N-25

T 24 S. R. 13 E. R.D.

Ft Rock County

Lake

SE

Cor. of  
13

Merid. WILLAMETTE N.F.

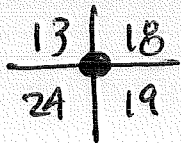
DESCHUTES State

OREGON

Section 13

SEE: N-01 T. 24 S., R. 14 E., W.M.

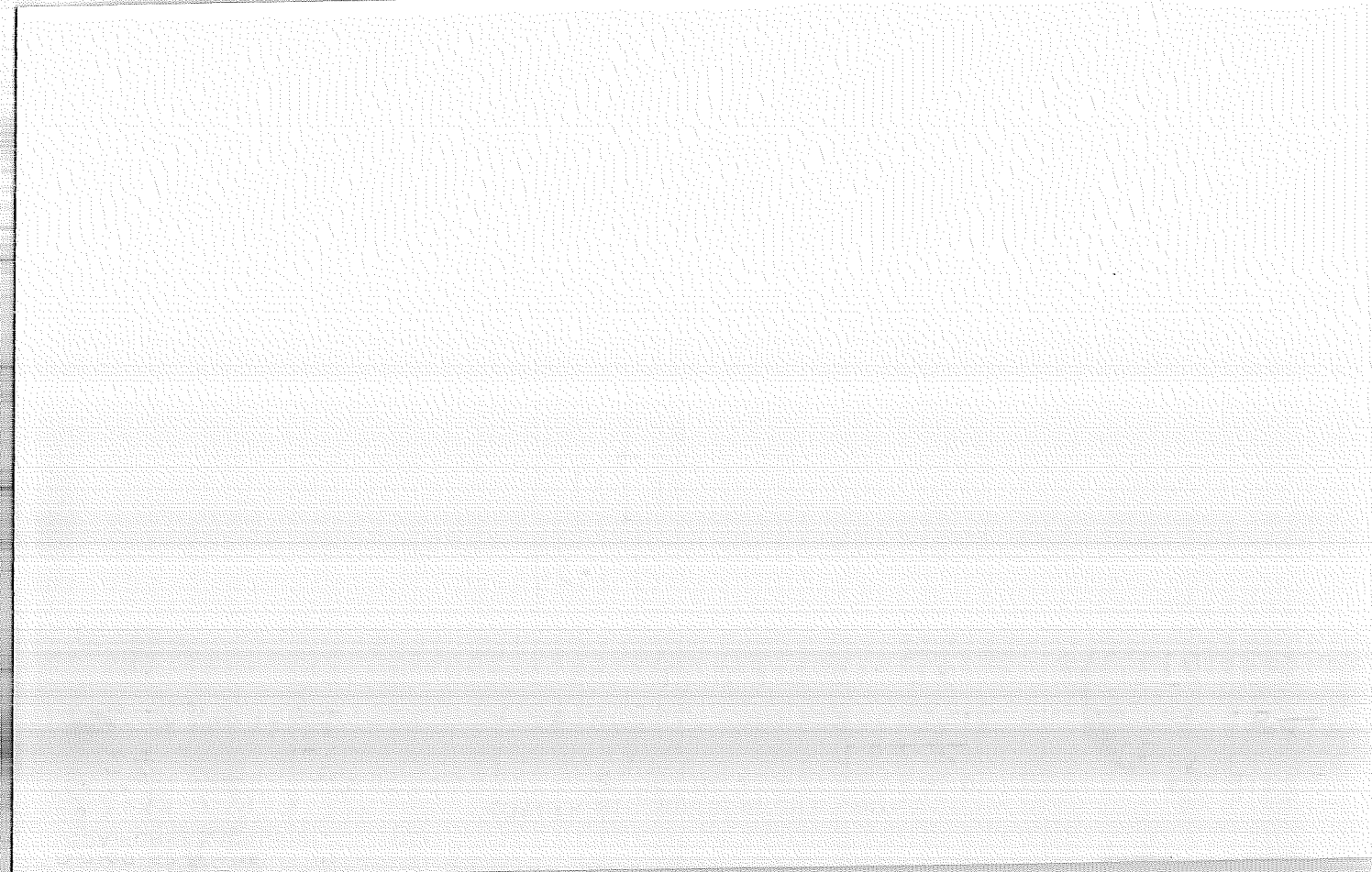
BCSP



T24S

R. 13E

R. 14E



Index File No. P-1

CORNER RECORD (SEARCH)

Tract or Survey No. \_\_\_\_\_ Cor. No. P-1

T 24S, R. 13E,

R.D. Fort Rock County Lake

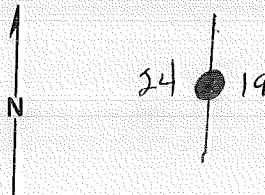
1/4 Cor

Merid. Will

N.F. Deschutes State Oregon

CORNER DIAGRAM

DESCRIBE CORNER MONUMENT FOUND



SEE: P-25, T24S, R12E BLM B.C.

DESCRIBE BEARING TREES OR OTHER OFFICIAL ACCESSORIES FOUND

EV. F.D.

PHOTO IDENTIFICATION DATA

Photo No. \_\_\_\_\_  
Filed At. \_\_\_\_\_  
Object Ident. \_\_\_\_\_  
Ident. By \_\_\_\_\_  
*Signature*

DESCRIBE CORNER LOCATION RELATIVE TO NEAR-BY FEATURES, ALSO HOW TO REACH CORNER

PLANE COORDINATE POSITION DATA

State \_\_\_\_\_ Zone \_\_\_\_\_  
X \_\_\_\_\_  
Y \_\_\_\_\_  
Estab. By \_\_\_\_\_  
*Agency*

Signature

Title

Division

Headquarters

Date

7100-52

J.S.

Survey Tech

USFS

11/76

REV. 65 5

CORNER RECORD (PERPETUATION)

MONUMENT: DESCRIBE NEW MONUMENT SET, OR WORK DONE TO PRESERVE EXISTING MONUMENT

9

ACCESSORIES DESCRIBE NEW BT'S WITNESS OBJECTS ETC. ESTABLISHED, OR WORK DONE TO PRESERVE EXISTING EVIDENCE

10

Work Done By. \_\_\_\_\_ Title \_\_\_\_\_ Date \_\_\_\_\_ State Registration No. or Agency \_\_\_\_\_

Certified Cor. Record Prepared? Yes No Filed At: \_\_\_\_\_ Date \_\_\_\_\_

REMARKS

12

Index File No. T. R. M. Tract or Surv. No. Cor. **P-1**

13

LAND CORNER RECORD

P-9

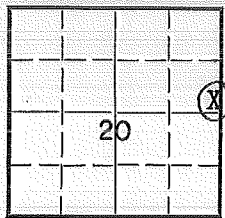
5680-2

(Rectangular)

1. T 24S R 13E No. P-9 Cor. 1/4 Mer. Wm State Oregon N. F. Deschutes Dist. Fort Rock

2. Corner Status

3. Original Description \_\_\_\_\_ Vol. \_\_\_\_\_ Page 608 Where Recorded \_\_\_\_\_



4. Description of Corners: Set post for 1/4 sec. corner from which:  
 A pine 26" in diam. bears N80°E 112 lks. dist.  
 A pine 30" in diam. bears S30°W 62 lks. dist.

5. Investigation Notes:  
Found: Wooden post 3"x3"x4' standing in good condition marked  
1/4S-S21-1/4S-S20

7. Photo Identification

24" pp Brs. S20°W 36' from post

Photo No. EGI 20-107  
 Ident. By: H. G. Little

8. Plane Coordinate Position Data

State \_\_\_\_\_ Zone \_\_\_\_\_  
 X \_\_\_\_\_  
 Y \_\_\_\_\_  
 Estab. By \_\_\_\_\_  
 Field Book No. \_\_\_\_\_  
 Where Filed \_\_\_\_\_

9. Evaluation

Authentic \_\_\_\_\_  
 Needs Verif. \_\_\_\_\_ Monument X  
 Re-estab. X Survey \_\_\_\_\_  
 Land Status \_\_\_\_\_

6. Signed H. G. Little Title Range Conser. Date 12-18-63

PERPETUATION RECORD

10. Monument:

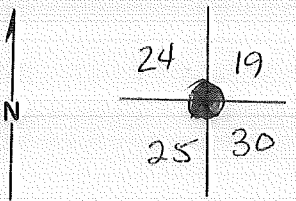
11. Accessories

12. Set By _____ Title _____ License _____ Agency _____ Date _____	13. Recorded By _____ Volume _____ Page _____ (Agency) (Date) (City) (County) (State)
---	---

14. Remarks:

Index File No. R-1 CORNER RECORD (SEARCH) Tract or Survey No. \_\_\_\_\_ Cor. No. R-1  
 T 24S., R. 13E., R.D. Fort Rock County Lake \_\_\_\_\_  
 Merid. Will N.F. Deschutes State Oregon \_\_\_\_\_  
 \_\_\_\_\_ Sec Cor \_\_\_\_\_

CORNER DIAGRAM



DESCRIBE CORNER MONUMENT FOUND

SEE: T24S, R12E, R-25  
 BLM BC.

DESCRIBE BEARING TREES OR OTHER OFFICIAL ACCESSORIES FOUND

EXIFD.

DESCRIBE CORNER LOCATION RELATIVE TO NEAR-BY FEATURES, ALSO HOW TO REACH CORNER

PHOTO IDENTIFICATION DATA

Photo No. \_\_\_\_\_  
 Filed At. \_\_\_\_\_  
 Object Ident. \_\_\_\_\_  
 Ident. By \_\_\_\_\_  
 Signature \_\_\_\_\_

PLANE COORDINATE POSITION DATA

State \_\_\_\_\_ Zone \_\_\_\_\_  
 X \_\_\_\_\_  
 Y \_\_\_\_\_  
 Estab. By \_\_\_\_\_  
 Agency \_\_\_\_\_

Signature D.S. Title Survey Tech Division USFS Headquarters \_\_\_\_\_ Date 11/26  
 \_\_\_\_\_ 7100-52 REV. 65 5



CORNER RECORD (PERPETUATION)

MONUMENT: DESCRIBE NEW MONUMENT SET, OR WORK DONE TO PRESERVE EXISTING MONUMENT

9

ACCESSORIES DESCRIBE NEW BT'S WITNESS OBJECTS ETC. ESTABLISHED, OR WORK DONE TO PRESERVE EXISTING EVIDENCE

10

Work Done By \_\_\_\_\_ Title \_\_\_\_\_ Date \_\_\_\_\_ State Registration No. or Agency \_\_\_\_\_

Certified Cor. Record Prepared? Yes No Filed At: \_\_\_\_\_ Date \_\_\_\_\_

11

REMARKS

12

Index File No. T. R. M. Tract or Surv. No. Cor. **R-1**

13

LAND CORNER RECORD

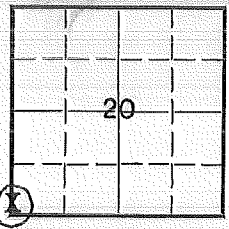
R-5 5680-2

(Rectangular)

1. T. 24S R. 13E No. R-5 Cor. Sec. Mer. Wm. State Oregon N. F. Deschutes Dist. Fort Rock

2. Corner Status

3. Original Description Vol. Page 618 Where Recorded



4. Description of Corners: Set post for corner to Secs. 19, 20, 29, & 30 from which  
A pine 36" in diam. bears S74°W 32 lks. dist.  
A pine 30" in diam. bears N21°W 72 lks. dist.  
A pine 6" in diam. bears S77°E 110 lks. dist.  
A pine 24" in diam. bears N58°E 90 lks. dist.

5. Investigation Notes:  
Found:  
Wooden post 3"x3"x3' standing in very poor condition marked S20 (the remainder of the faces are too rotten to read.)

40" pp Brs N16°W 42' from the post  
24" snag Brs S72°W 18' from the post marked T. 24S, S30BT  
26" pp Brs N58°E 55' from the post

7. Photo Identification  
Photo No. EGI-20-105  
Ident. By: H. G. Little

8. Plane Coordinate Position Data  
State \_\_\_\_\_ Zone \_\_\_\_\_  
X \_\_\_\_\_  
Y \_\_\_\_\_  
Estab. By \_\_\_\_\_  
Field Book No. \_\_\_\_\_  
Where Filed \_\_\_\_\_

9. Evaluation  
Authentic \_\_\_\_\_  
Needs Verif. \_\_\_\_\_ Monument   
Re-estab.  Survey \_\_\_\_\_  
Land Status USFS

6. Signed H. G. Little Title Range Conservationist Date 12-18-63

PERPETUATION RECORD

10. Monument:

11. Accessories

		Field Book _____	Page _____
12. Set By _____	Title _____	13. Recorded By _____	Volume _____
		(Agency)	Page _____
License _____	Agency _____	Date _____	(Date) _____
			(City) _____
			(County) _____
			(State) _____

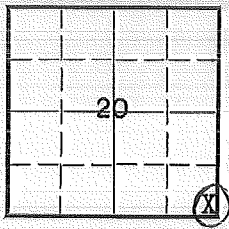
14. Remarks:

LAND CORNER RECORD

R-9 5680-2

1. T 24S R 13E No. R-9 Cor. Sec Mer. Wm State Oregon (Rectangular) N. F. Deschutes Dist. Fort Rock

2. Corner Status



3. Original Description Vol. Page 606 Where Recorded

4. Description of Corners: Set basalt stone 15x12x10 in mound of stone for corner to Secs. 20,21,28 and 29, from which:  
A pine 30" in diam. bears S61°E 51 lks. dist.  
A pine 30" in diam. bears N22°W 17 lks. dist.

5. Investigation Notes:  
Found: Wooden post 3 1/2"x3 1/2"x2 1/2' lying on ground in fair condition marked S20-T24S-S29-S28-R13E-S21 (also mound of stone)  
32" pp stumps Brs N22°W 11' from post

7. Photo Identification  
Photo No. EGI-20-105  
Ident. By: H. G. Little

Found by J.N. Tennant U.S.G.S. 11/77  
Photo Identification: Line 2, Exposure 235  
Found Scribed Post in mound of Rock  
Original B.T. are stumps  
4 New B.T.'s. - U.S.F.S. Tags.

8. Plane Coordinate Position Data  
State Zone  
X  
Y  
Estab. By  
Field Book No.  
Where Filed

9. Evaluation  
Authentic  
Needs Verif. Monument X  
Re-estab. X Survey  
Land Status

6. Signed H. G. Little Title Range Conser. Date 12-18-63

PERPETUATION RECORD

10. Monument:

11. Accessories

12. Set By _____ Title _____ License _____ Agency _____ Date _____	13. Recorded By _____ Volume _____ Page _____ (Agency) _____ (Date) (City) (County) (State)
---	--

14. Remarks:

Index  
File No. T-1  
T 24S, R. 13E,  
Merid. Will

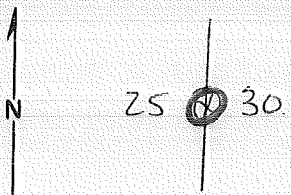
CORNER RECORD (SEARCH)

Tract or  
Survey No. \_\_\_\_\_  
Cor.  
No. T-1

R.D. Fork Rock County Lake  
N.F. Deschutes State Oregon

1/4 Cor

CORNER DIAGRAM



DESCRIBE CORNER MONUMENT FOUND

See: T-25, T-24S, R-13E

DESCRIBE BEARING TREES OR OTHER OFFICIAL ACCESSORIES FOUND

SFNF

PHOTO IDENTIFICATION DATA

Photo No. \_\_\_\_\_  
Filed At. \_\_\_\_\_  
Object Ident. \_\_\_\_\_  
Ident. By \_\_\_\_\_  
*Signature*

DESCRIBE CORNER LOCATION RELATIVE TO NEAR-BY FEATURES, ALSO HOW TO REACH CORNER

PLANE COORDINATE POSITION DATA

State \_\_\_\_\_ Zone \_\_\_\_\_  
X \_\_\_\_\_  
Y \_\_\_\_\_  
Estab. By \_\_\_\_\_  
*Agency*

Signature \_\_\_\_\_ Title \_\_\_\_\_ Division \_\_\_\_\_ Headquarters \_\_\_\_\_ Date \_\_\_\_\_

CORNER RECORD (PERPETUATION)

MONUMENT: DESCRIBE NEW MONUMENT SET, OR WORK DONE TO PRESERVE EXISTING MONUMENT

9

ACCESSORIES DESCRIBE NEW BT'S WITNESS OBJECTS ETC. ESTABLISHED, OR WORK DONE TO PRESERVE EXISTING EVIDENCE

10

Work Done By \_\_\_\_\_ Title \_\_\_\_\_ Date \_\_\_\_\_ State Registration No. or Agency \_\_\_\_\_

Certified Cor. Record Prepared ? Yes No Filed At: \_\_\_\_\_ Date \_\_\_\_\_ 11

REMARKS

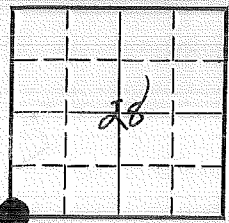
Index File No. T. R. M. Tract or Surv. No. Cor. T-1 12 13

LAND CORNER RECORD

V-9 5680-2

1. T 24S R 13E No. V-9 Cor. Sec. Mer. Will State Oregon (Rectangular) N. F. Deschutes Dist. Fort Rock

2. Corner Status



3. Original Description \_\_\_\_\_ Vol. \_\_\_\_\_ Page \_\_\_\_\_ Where Recorded \_\_\_\_\_

4. Description of Corners:

5. Investigation Notes: Metal post on south side of "29" tree Bearing  
 South 55°W. Dis. 22' to corner. Bearing

7. Photo Identification Line 2  
 Photo No. 65-V00H #236  
 Ident. By: J.N. Tennant USGS

Rock pile and post--post rotten. 2' above ground.  
 BT-Sec. 29-PP 29" Dia. Bearing N 10°W Dis. 25'  
 Bt- " 28 " 29" " " " N.50°E. " 22'  
 BT- " 32 " 15" " " " S.10°W. " 9'  
 BT- " 33 " 38" " " " E.20°S. " 39'

8. Plane Coordinate Position Data  
 State \_\_\_\_\_ Zone \_\_\_\_\_  
 X \_\_\_\_\_  
 Y \_\_\_\_\_  
 Estab. By \_\_\_\_\_  
 Field Book No. \_\_\_\_\_  
 Where Filed \_\_\_\_\_

Found BLM Cap - Squared Post  
 4 Original B.T.'s found (NW BT is dead Snag - SE BT. is down)  
 2 New BT's

9. Evaluation  
 Authentic L  
 Needs Verif. \_\_\_\_\_ Monument No  
 Re-estab. \_\_\_\_\_ Survey \_\_\_\_\_  
 Land Status F.S.

6. Signed M.L.C Title \_\_\_\_\_ Date 1959



PERPETUATION RECORD

10. Monument:

11. Accessories

Field Book \_\_\_\_\_ Page \_\_\_\_\_

12. Set By \_\_\_\_\_ Title \_\_\_\_\_

13. Recorded By \_\_\_\_\_ Volume \_\_\_\_\_ Page \_\_\_\_\_

License \_\_\_\_\_ Agency \_\_\_\_\_ Date \_\_\_\_\_

(Agency)  
(Date) (City) (County) (State)

14. Remarks:

Index File No. 1771

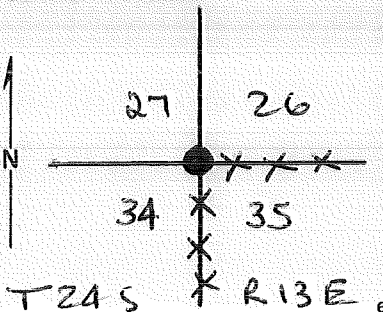
**CORNER RECORD (SEARCH)**  
(Ref. FSM 7151.4)

Tract or Survey No. 000906 Cor. No. V-17

T 24 S R. 13 E R.D. Ft. Rock County Lake SW Cor Sec 26

Merid. WMT N.F. Dacshutes State Oregon

CORNER DIAGRAM



DESCRIBE CORNER MONUMENT FOUND

SNF - Logging Disturbance

DESCRIBE BEARING TREES OR OTHER OFFICIAL ACCESSORIES FOUND

26" P. pine brs S 21° E @ 121Ks - Scribing visible  
P. pine windfall 26" Dia, brs N 21° W, 172Ks - fallen on burned-out face,

PHOTO IDENTIFICATION DATA

Photo No. \_\_\_\_\_  
Filed At. \_\_\_\_\_  
Object Ident. \_\_\_\_\_  
Ident. By \_\_\_\_\_  
*Signature*

DESCRIBE CORNER LOCATION RELATIVE TO NEAR-BY FEATURES, ALSO HOW TO REACH CORNER

PLANE COORDINATE POSITION DATA

State \_\_\_\_\_ Zone \_\_\_\_\_  
X \_\_\_\_\_  
Y \_\_\_\_\_  
Estab. By \_\_\_\_\_  
*Agency*

Signature Bill Ham

Title PLS Division CS

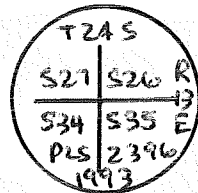
Headquarters SO

Date 6/93

CORNER RECORD (PERPETUATION)

MONUMENT: DESCRIBE NEW MONUMENT SET, OR WORK DONE TO PRESERVE EXISTING MONUMENT

Set ACAP 6" into ground in mound of stone



ACCESSORIES: DESCRIBE NEW BT'S WITNESS OBJECTS ETC. ESTABLISHED, OR WORK DONE TO PRESERVE EXISTING EVIDENCE

P. pine <sup>25'</sup> 25" dia brs N70°52' E @ 101 1/2 ft mkd T245 R13E S26 BT  
 " 26" " " S19°05' E " 8" " (original BT)  
 " 29" " " S50°55' W " 61" " mkd T245 R13E S34 BT  
 " 10" " " N44°32' W " 59 1/2 " " T245 R13E S27 BT

Fence line is 8' south

Work Done By: Bill Ham Title: PLS Date: 6/93 State Registration No. 2396  
 or Agency

Certified Cor. Record Prepared?  (Yes) No Filed At: Lake Co. Date: 8/9/93

Record:

REMARKS

Set Basalt stone 10x10x10 and dug pits per instructions  
 A Pine 24" dia bears S 21° E, 121ks Dist  
 " " 18" " " N 20° W 1621ks Dist

Index File No. 1971

**CORNER RECORD (SEARCH)**

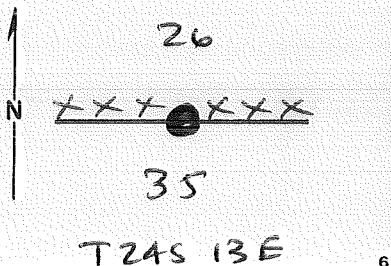
(Ref. FSM 7151.4)

Tract or Survey No. 000906 Cor. No. V-19

T 24S, R. 13E, Merid. Wmt

R.D. Ft. Rock County Lake N.F. Deschutes State Oregon S/A Sec. 26

**CORNER DIAGRAM**



DESCRIBE CORNER MONUMENT FOUND 5X8X10  
 A basalt stone ~~10x8x8~~ and raised mound of stone, stone marked faintly 1/4

DESCRIBE BEARING TREES OR OTHER OFFICIAL ACCESSORIES FOUND  
 A p.pine 26" dia brs N 13° E, 44 lks w/overgrown face

PHOTO IDENTIFICATION DATA  
 Photo No. \_\_\_\_\_  
 Filed At. \_\_\_\_\_  
 Object Ident. \_\_\_\_\_  
 Ident. By \_\_\_\_\_  
 Signature \_\_\_\_\_

DESCRIBE CORNER LOCATION RELATIVE TO NEAR-BY FEATURES, ALSO HOW TO REACH CORNER

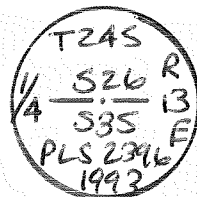
PLANE COORDINATE POSITION DATA  
 State \_\_\_\_\_ Zone \_\_\_\_\_  
 X \_\_\_\_\_  
 Y \_\_\_\_\_  
 Estab. By \_\_\_\_\_  
 Agency \_\_\_\_\_

Signature Bill Ham Title PLS Division CS Headquarters SO Date 6/93 FS-7100-52 (3/68)

CORNER RECORD (PERPETUATION)

MONUMENT: DESCRIBE NEW MONUMENT SET, OR WORK DONE TO PRESERVE EXISTING MONUMENT

ACAP 6" in ground in mound of stone



9

ACCESSORIES : DESCRIBE NEW BT'S WITNESS OBJECTS ETC. ESTABLISHED, OR WORK DONE TO PRESERVE EXISTING EVIDENCE

- A 26" p. pine brs N13°01'E @ 28<sup>8</sup>' (original BT)
- A 14" " " S72°37'E @ ~~28~~ 75<sup>2</sup>' mkd 1/4 S 35 BT
- A 19" " " S30°16'E @ 61' mkd 1/4 S35 BT
- A 21" " " N76°23'E @ 149<sup>5</sup> mkd 1/4 S26 BT

10

Work Done By Bill Ham Title PLS Date 6/93 State Registration No. 2396  
or Agency

Certified Cor. Record Prepared?  Yes  No Filed At. Lake Co. Date 8/17/93

11

REMARKS  
Set basalt stone 10x8x8 raised mound of stone,  
10" P. pine brs N10°E @ 44 1/4 dist

12

13

Index File No. 1971 T. R. M. Tract or Surv. No. Cor. V-19

Index  
File No. 2171

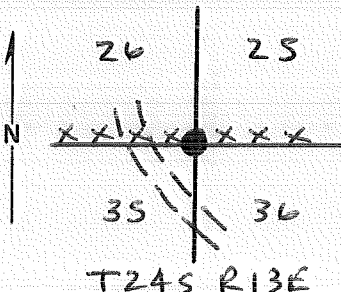
**CORNER RECORD (SEARCH)**  
(Ref. FSM 7151.4)

Tract or Survey No. 000906 Cor. No. V-21

T 24 S. R. 13 E. R.D. Ft. Rock County Lake NW Cor. S. 36

Merid. WMT N.F. Deschutes State Oregon

**CORNER DIAGRAM**



**DESCRIBE CORNER MONUMENT FOUND**

Basalt Stone of 8x9x11 inches with faint notches on E, and S, edges

**DESCRIBE BEARING TREES OR OTHER OFFICIAL ACCESSORIES FOUND**

- A 26" dia. p. pine brs N 69° 31' E @ 86' mkd T24SR13ES25BT
- " 31" " " " S 120° 53' E @ 50' (original BT)
- " 14" " " " S 83° 03' W @ 108' mkd T24S R13E S35B
- " 29" " " " N 88° 20' E @ 48' (original BT)

A mound of stone brs 2' East

**DESCRIBE CORNER LOCATION RELATIVE TO NEAR-BY FEATURES, ALSO HOW TO REACH CORNER**

**PHOTO IDENTIFICATION DATA**

Photo No. \_\_\_\_\_  
Filed At. \_\_\_\_\_  
Object Ident. \_\_\_\_\_  
Ident. By \_\_\_\_\_  
Signature \_\_\_\_\_

**PLANE COORDINATE POSITION DATA**

State \_\_\_\_\_ Zone \_\_\_\_\_  
X \_\_\_\_\_  
Y \_\_\_\_\_  
Estab. By \_\_\_\_\_  
Agency \_\_\_\_\_

Signature  
B. Ham

Title  
PLS

Division  
CS

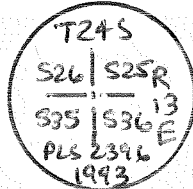
Headquarters  
SO

Date  
6/93

CORNER RECORD (PERPETUATION)

MONUMENT: DESCRIBE NEW MONUMENT SET, OR WORK DONE TO PRESERVE EXISTING MONUMENT

Set ACAP 24" in ground surrounded by  
Ring of stone



ACCESSORIES : DESCRIBE NEW BT'S WITNESS OBJECTS ETC. ESTABLISHED, OR WORK DONE TO PRESERVE EXISTING EVIDENCE

See other side

Work Done By B. Ham Title PLS Date 6/93 State Registration No. 2396  
or Agency

Certified Cor. Record Prepared?  Yes  No Filed At: Lake Co. Date 8/9/93

REMARKS

GLO Record: Set basalt stone 12x10x10 and dug pits as per  
instructions  
10" dia. Pine brs S 10° E @ 77 IKs dist  
18" " " brs N 66° W @ 73 IKs dist

Index File No. 2171 T. R. M. Tract or Surv. No. Cor. V-21

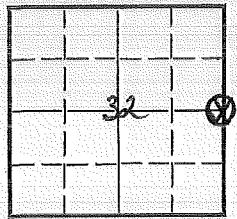
LAND CORNER RECORD

(Rectangular)

X-9 5680-2

1. T 24S R 13E No. X-9  $\frac{1}{4}$  Will Mer. State Oregon Cor. N. F. Deschutes Dist. Fert Reek

2. Corner Status



3. Original Description \_\_\_\_\_ Vol. \_\_\_\_\_ Page \_\_\_\_\_ Where Recorded \_\_\_\_\_

4. Description of Corners:

7. Photo Identification

Photo No. \_\_\_\_\_  
Ident. By: \_\_\_\_\_

5. Investigation Notes: Metal poster on West side of ~~4-19~~<sup>Bearing</sup> PP. Bearings of  $0^{\circ}$  W. to corner. 18"

Post rotted off. 18" Bearing  
BT- Sec. 33-PP.- ~~4-9~~<sup>Bearing</sup> Dia. Bearings  $0^{\circ}$  E. Dis. 20'

8. Plane Coordinate Position Data

State \_\_\_\_\_ Zone \_\_\_\_\_  
X \_\_\_\_\_  
Y \_\_\_\_\_  
Etab. By \_\_\_\_\_  
Field Book No. \_\_\_\_\_  
Where Filed \_\_\_\_\_

9. Evaluation

Authentic \_\_\_\_\_  
Needs Verif. \_\_\_\_\_ Monument No  
Re-estab. ✓ Survey \_\_\_\_\_  
Land Status F.S.

6. Signed M. L. C. Title \_\_\_\_\_ Date 1959



PERPETUATION RECORD

10. Monument:

11. Accessories

Field Book \_\_\_\_\_ Page \_\_\_\_\_

12. Set By \_\_\_\_\_ Title \_\_\_\_\_  
License \_\_\_\_\_ Agency \_\_\_\_\_ Date \_\_\_\_\_

13. Recorded By \_\_\_\_\_ (Agency) \_\_\_\_\_ Volume \_\_\_\_\_ Page \_\_\_\_\_  
(Date) \_\_\_\_\_ (City) \_\_\_\_\_ (County) \_\_\_\_\_ (State) \_\_\_\_\_

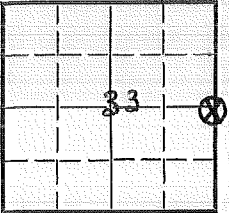
14. Remarks:

LAND CORNER RECORD  
(Rectangular)

X-13 5680-2

R 24S 13E x-13 Sec. Will State Oregon N. F. Deschutes Dist. Fort Rock

2. Corner Status



3. Original Description Vol. Page Where Recorded

4. Description of Corners:

5. Investigation Notes: Metal post on South side of PP <sup>?</sup>10' Dia. Bearing South--33' 38" Bearing

BT--Sec. 34--PP. <sup>38"</sup>10' Dia. Bearing N 10'E. Dis. 33'

7. Photo Identification

Photo No. Ident. By:

8. Plane Coordinate Position Data

State Zone X Y Estab. By Field Book No. Where Filed

9. Evaluation

Authentic Needs Verif. Monument No Re-estab. Survey Land Status F.S.

6. Signed M.L.C. Title Date 1959

PERPETUATION RECORD

10. Monument:

11. Accessories

Field Book \_\_\_\_\_ Page \_\_\_\_\_

12. Set By \_\_\_\_\_ Title \_\_\_\_\_  
License \_\_\_\_\_ Agency \_\_\_\_\_ Date \_\_\_\_\_

13. Recorded By \_\_\_\_\_ (Agency) \_\_\_\_\_ Volume \_\_\_\_\_ Page \_\_\_\_\_  
(Date) \_\_\_\_\_ (City) \_\_\_\_\_ (County) \_\_\_\_\_ (State) \_\_\_\_\_

14. Remarks:

Index

File No. 1773

CORNER RECORD (SEARCH) (Ref. FSM 7151.4)

Contract or

Survey No. 000906

Cor. No. X-17

T 24 S. R. 13 E. R.D. FORT ROCK County LAKE

W/4

Cor. of

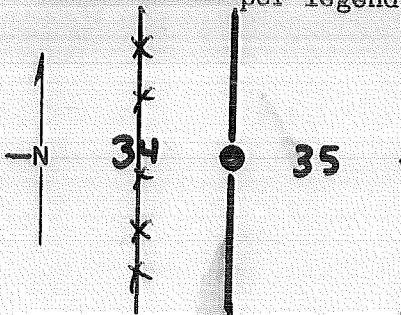
Merid. Willamette

N.F. Deschutes

State Oregon

Section 35

CORNER DIAGRAM per legend



DESCRIBE CORNER MONUMENT FOUND

SFNF

SFNF - 6/93

DESCRIBE BEARING TREES OR OTHER OFFICIAL ACCESSORIES FOUND

SFNF

SFNF 6/93

PHOTO IDENTIFICATION DATA

Photo No. \_\_\_\_\_

Filed At. \_\_\_\_\_

Object Ident. \_\_\_\_\_

Ident. By \_\_\_\_\_

Signature

DESCRIBE CORNER LOCATION RELATIVE TO NEAR-BY FEATURES, ALSO HOW TO REACH CORNER

CORNER LEGEND:

FS or Unverified

Contr. Other

○ ◊ Searched For/Not Found

⊗ ⊠ Evidence Found/Accept.

● ◆ Permanent Mon. Set/Fd.

Searched By:

Title

**ST**

Division

**SO**

Headquarters

**BEND**

Date

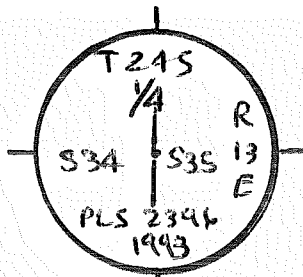
**1983**

CORNER RECORD (PERPETUATION)

MONUMENT: DESCRIBE NEW MONUMENT SET, OR WORK DONE TO PRESERVE EXISTING MONUMENT

Set by single proportion ACAP 12" in Ground  
in mound of stone

MONUMENT STAMPED



ACCESSORIES : DESCRIBE NEW BT'S WITNESS OBJECTS ETC. ESTABLISHED, OR WORK DONE TO PRESERVE EXISTING EVIDENCE

A 4' x 6' x 4" rock outcrop brs N29°49' E @ 14<sup>0</sup>' mkd X B0 in South End

A 2' x 1' x 3" " " " S51°05' E @ 49 " X B0

A P. Pine 31" dia, bears S49°56' W @ 73<sup>2</sup>' mkd 1/4 S34 BT

" " 27" " " N55°34' W @ 88<sup>2</sup>' " 1/4 S34 BT

McQueen Well brs S23°51' E @ 608<sup>3</sup>' - Fence line is 44' West

Work Done By \_\_\_\_\_

Title \_\_\_\_\_

Date \_\_\_\_\_

State Registration No.  
or Agency \_\_\_\_\_

Plat or \_\_\_\_\_

Certified Cor. Record Prepared? Yes

No

Filed At: \_\_\_\_\_

Co. Surveyor's Office Date \_\_\_\_\_

History of  
Surveys,  
G.L.O.,  
etc.

**STONE : 10" X 10" X 8" IN MOUND OF STONE**

**24" PINE - N 80° W @ 58' FT**

Index File No.

1773

T.

S., R.

E., W.M.

Contract or Surv. No.

Cor.

X-17

Index

File No. **2173**

CORNER RECORD (SEARCH)

Contract or

(Ref. FSM 7151.4)

Survey No.

Cor.

No. **X-21**

T **24** S. R. **13** E. R.D.

**FORT ROCK** County

**LAKE**

**W 44** Cor. of

**36**

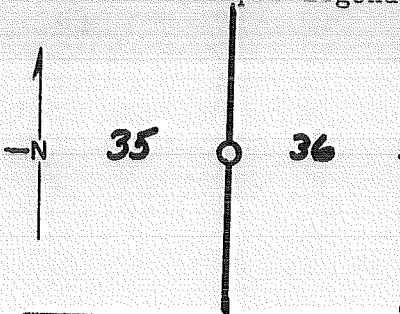
Merid. **Willamette**

N.F. **Deschutes**

State **Oregon**

Section **36**

CORNER DIAGRAM per legend



DESCRIBE CORNER MONUMENT FOUND

**JFNF**

**FOUND TWO PITS 18" X 6" DEEP - 3 FEET APART  
BUT NO STONES, LOTS OF MOSS ON STONES.**

DESCRIBE BEARING TREES OR OTHER OFFICIAL ACCESSORIES FOUND

**SF/NF**

PHOTO IDENTIFICATION DATA

Photo No. \_\_\_\_\_

Filed At. \_\_\_\_\_

Object Ident. \_\_\_\_\_

Ident. By \_\_\_\_\_

Signature

DESCRIBE CORNER LOCATION RELATIVE TO NEAR-BY FEATURES, ALSO HOW TO REACH CORNER

**CHAINED  
PACED / COMPASSED FROM SEC COR TO  
THE SOUTH.**

CORNER LEGEND:

FS or Unverified

Contr. Other



Searched For/Not Found



Evidence Found/Accept.



Permanent Mon. Set/Fd.

Searched By:

Title

Division

Headquarters

Date

**STEVE CHAMBERLIN**

**ST**

**SO**

**BEND**

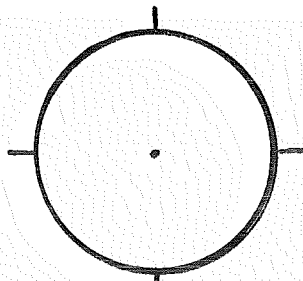
**7-28-83**

CORNER RECORD (PERPETUATION)

MONUMENT: DESCRIBE NEW MONUMENT SET, OR WORK DONE TO PRESERVE EXISTING MONUMENT

\_\_\_\_\_  
\_\_\_\_\_  
\_\_\_\_\_

MONUMENT STAMPED



9

ACCESSORIES: DESCRIBE NEW BT'S WITNESS OBJECTS ETC. ESTABLISHED, OR WORK DONE TO PRESERVE EXISTING EVIDENCE

\_\_\_\_\_  
\_\_\_\_\_  
\_\_\_\_\_

10

Work Done By \_\_\_\_\_ Title \_\_\_\_\_ Date \_\_\_\_\_ State Registration No. \_\_\_\_\_  
or Agency \_\_\_\_\_  
Plat or \_\_\_\_\_  
Certified Cor. Record Prepared? Yes No Filed At: \_\_\_\_\_ Co. Surveyor's Office Date \_\_\_\_\_

11

History of Surveys, G.L.O., etc. QXBK8 STONE W/PITS

Index File No. 2173 T. S., R. E., W.M. Contract or Surv. No. \_\_\_\_\_ Cor. X-21

12

13

USDA-FOREST SERVICE

Index

File No. \_\_\_\_\_

CORNER RECORD (SEARCH)

(Ref. FSM 7151.4)

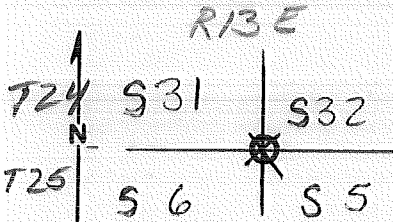
Tract or  
Survey No. \_\_\_\_\_

Cor.  
No. **2-05**

T 24 S. R. 13 E. R.D. Ft. Rock County Lake

Merid. WILLAMETTE N.F. DESCHUTES State OREGON

CORNER DIAGRAM



DESCRIBE CORNER MONUMENT FOUND

DESCRIBE BEARING TREES OR OTHER OFFICIAL ACCESSORIES FOUND

2 Bearing trees (NW+SW)

PHOTO IDENTIFICATION DATA

Photo No. GS-VDOH  
 Filed At. Mendo Park, CA.  
 Object Ident. SW BT  
 Ident. By J.N. Tennant USGS  
*Signature*

Line 2, Exposure 237

DESCRIBE CORNER LOCATION RELATIVE TO NEAR-BY FEATURES, ALSO HOW TO REACH CORNER

PLANE COORDINATE POSITION DATA

State \_\_\_\_\_ Zone \_\_\_\_\_  
 X \_\_\_\_\_  
 Y \_\_\_\_\_  
 Estab. By \_\_\_\_\_  
*Agency*

Signature \_\_\_\_\_

Title \_\_\_\_\_

Division \_\_\_\_\_

Headquarters \_\_\_\_\_

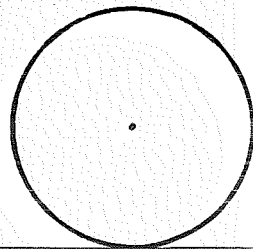
Date \_\_\_\_\_

D-7100-52 (10/78)



CORNER RECORD (PERPETUATION)

MONUMENT: DESCRIBE NEW MONUMENT SET, OR WORK DONE TO PRESERVE EXISTING MONUMENT



ACCESSORIES DESCRIBE NEW BT'S WITNESS OBJECTS ETC. ESTABLISHED, OR WORK DONE TO PRESERVE EXISTING EVIDENCE

Work Done By \_\_\_\_\_ Title \_\_\_\_\_ Date \_\_\_\_\_ State Registration No. or Agency \_\_\_\_\_

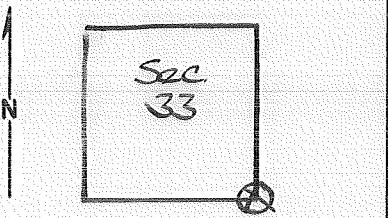
Certified Cor. Record Prepared? Yes No Filed At: \_\_\_\_\_ Date \_\_\_\_\_

REMARKS

Index File No. T. S., R. E., W.M. Tract or Surv. No. Cor. 3-05

Index File No. Z-13 CORNER RECORD (SEARCH) (Ref. FSM 7151.4) Tract or Survey No. Cor. No. Z-13  
 T 24S R. 13E R.D. Fort Rock County Lake Sec. Cor  
 Merid. Will N.F. Deschutes State Ore

CORNER DIAGRAM



DESCRIBE CORNER MONUMENT FOUND 2

DESCRIBE BEARING TREES OR OTHER OFFICIAL ACCESSORIES FOUND 2

3 BT.'s Good Condition w/USFS Tags  
 SE. BT. not recovered.

PHOTO IDENTIFICATION DATA

Photo No. GS-VDOH  
 Filed At. Menlo Park, Ca.  
 Object Ident. Fe Cor. ident  
 Ident. By J.N. Tennant/USGS  
11/77 *Signature*

(Line 2 - Exposure 201) 3

DESCRIBE CORNER LOCATION RELATIVE TO NEAR-BY FEATURES, ALSO HOW TO REACH CORNER 3

PLANE COORDINATE POSITION DATA

State \_\_\_\_\_ Zone \_\_\_\_\_  
 X \_\_\_\_\_  
 Y \_\_\_\_\_  
 Estab. By \_\_\_\_\_  
*Agency*

Signature \_\_\_\_\_ Title \_\_\_\_\_ Division \_\_\_\_\_ Headquarters \_\_\_\_\_ Date \_\_\_\_\_ 4

CORNER RECORD (PERPETUATION)

MONUMENT : DESCRIBE NEW MONUMENT SET, OR WORK DONE TO PRESERVE EXISTING MONUMENT

9

ACCESSORIES : DESCRIBE NEW BT'S WITNESS OBJECTS ETC. ESTABLISHED, OR WORK DONE TO PRESERVE EXISTING EVIDENCE

10

Work Done By \_\_\_\_\_ Title \_\_\_\_\_ Date \_\_\_\_\_ State Registration No. or Agency \_\_\_\_\_

Certified Cor. Record Prepared ? Yes No Filed At: \_\_\_\_\_ Date \_\_\_\_\_

REMARKS

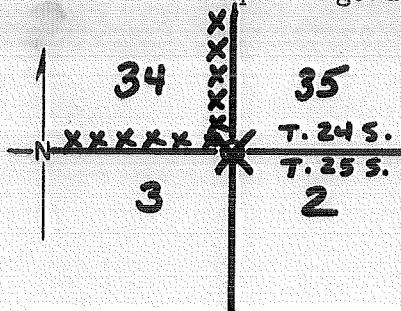
12

Index File No. T. R. M. Tract or Surv. No.

Cor. 2-13 13

Index File No. **1775** CORNER RECORD (SEARCH) Contract or Survey No. **000906** Cor. No. **2-17**  
 (Ref. FSM 7151.4)  
 T **24** S. R. **13** E. R.D. **FORT ROCK** County **LAKE** Cor. of  
 Merid. **Willamette** N.F. **Deschutes** State **Oregon** Section **1**

CORNER DIAGRAM per legend



DESCRIBE CORNER MONUMENT FOUND

**ROCK CAGE FOR FENCE FALLS WHERE STONE SHOULD BE. MOST LIKELY IN BOTTOM OF THE CAGE. (SFNF - 6/93)**

DESCRIBE BEARING TREES OR OTHER OFFICIAL ACCESSORIES FOUND

**18" DOWN/ROTTED PINE - N14°E @ 45 FT  
 T24**

PHOTO IDENTIFICATION DATA

Photo No. \_\_\_\_\_  
 Filed At \_\_\_\_\_  
 Object Ident. \_\_\_\_\_  
 Ident. By \_\_\_\_\_  
 Signature \_\_\_\_\_

**6/93 - Noted above windfall**

DESCRIBE CORNER LOCATION RELATIVE TO NEAR-BY FEATURES, ALSO HOW TO REACH CORNER

CORNER LEGEND:

- FS or Unverified
- Contr. Other
- ◊ Searched For/Not Found
- ⊗ ⊠ Evidence Found/Accept.
- ◆ Permanent Mon. Set/Fd.

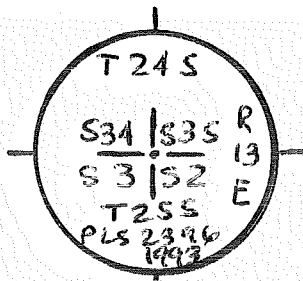
Searched By: **STEVE CHAMBERLIN ST** Title **SU** Division **BEND** Headquarters **7-26-83** Date

CORNER RECORD (PERPETUATION)

MONUMENT: DESCRIBE NEW MONUMENT SET, OR WORK DONE TO PRESERVE EXISTING MONUMENT

Set 2 1/2" dia x 30" long BCSP 28" into ground  
A penny at base of pipe

MONUMENT STAMPED



ACCESSORIES : DESCRIBE NEW BT'S WITNESS OBJECTS ETC. ESTABLISHED, OR WORK DONE TO PRESERVE EXISTING EVIDENCE

A P. pine 26" dia brs N 54° 01' E @ 154 2/3' mkd T 24 S R 13 E S 35 BT  
 " " 26" " " S 89° 59' E @ 132 2/3 " T 25 S R 13 E S 2 BT  
 " " 19" " " S 71° 03' W @ ~~127~~ 127 2/3 " T 25 S R 13 E S 3 BT  
 " " 24" " " N 03° 42' E @ 76 1/2' mkd T 24 S R 13 E S 34 BT

Fence line is 1 ft west

Work Done By \_\_\_\_\_ Title \_\_\_\_\_ Date \_\_\_\_\_ State Registration No. \_\_\_\_\_  
 Plat or \_\_\_\_\_ or Agency \_\_\_\_\_  
 Certified Cor. Record Prepared? Yes No Filed At: \_\_\_\_\_ Co. Surveyor's Office Date \_\_\_\_\_

History of Surveys, G.L.O., etc. \_\_\_\_\_  
 15 x 12 R 12 MOUND (STONE IN MOUND?)  
 20" PINE N 14° E @ 45 1/2 FT

Index

File No. 1975

CORNER RECORD (SEARCH)

Contract or

Cor.

(Ref. FSM 7151.4)

Survey No.

No. 2-19

T. 24 S. R. 13 E. R.D. FORT ROCK

County

LAKE

574

Cor. of

Merid. Willamette

N.F.

Deschutes

State

Oregon

Section

35

CORNER DIAGRAM per legend

DESCRIBE CORNER MONUMENT FOUND

**SFNF**

**LOTS OF STONES, BUT NO MARKS.**

**35**

**T. 24 S.**

**T. 25 S.**

**2**

DESCRIBE BEARING TREES OR OTHER OFFICIAL ACCESSORIES FOUND

PHOTO IDENTIFICATION DATA

Photo No. \_\_\_\_\_

Filed At. \_\_\_\_\_

Object Ident. \_\_\_\_\_

Ident. By \_\_\_\_\_

*Signature*

DESCRIBE CORNER LOCATION RELATIVE TO NEAR-BY FEATURES, ALSO HOW TO REACH CORNER

**STAFF COMPASS CHAINED FROM SEC COR TO THE WEST.**

CORNER LEGEND:

FS or Unverified

Contr. Other

○ ◊ Searched For/Not Found

⊗ ⊗ Evidence Found/Accept.

● ◆ Permanent Mon. Set/Fd.

Searched By:

**STEVE CHAMBERLIN**

Title

**ST**

Division

**SO**

Headquarters

**BEND**

Date

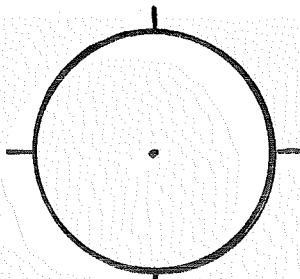
**7-28-83**

CORNER RECORD (PERPETUATION)

MONUMENT: DESCRIBE NEW MONUMENT SET, OR WORK DONE TO PRESERVE EXISTING MONUMENT

\_\_\_\_\_  
\_\_\_\_\_  
\_\_\_\_\_

MONUMENT STAMPED



9

ACCESSORIES : DESCRIBE NEW BT'S WITNESS OBJECTS ETC. ESTABLISHED, OR WORK DONE TO PRESERVE EXISTING EVIDENCE

\_\_\_\_\_  
\_\_\_\_\_  
\_\_\_\_\_

10

Work Done By \_\_\_\_\_ Title \_\_\_\_\_ Date \_\_\_\_\_ State Registration No. or Agency \_\_\_\_\_

Plat or Certified Cor. Record Prepared ? Yes No Filed At: \_\_\_\_\_ Co. Surveyor's Office Date \_\_\_\_\_

11

History of Surveys, G.L.O., etc.

**10x8x7 STONE**

\_\_\_\_\_  
\_\_\_\_\_  
\_\_\_\_\_

12

Index File No. **1975** T. S., R. E., W.M.

Contract or Surv. No.

Cor. **2-19** 13

Index

File No.

2175

CORNER RECORD (SEARCH)

(Ref. FSM 7151.4)

Contract or

Survey No.

Cor.

No.

2-21

T. 24 S. R. 13 E. R.D.

FOOT ROCK

County

LAKE

NW

Cor. of

Merid. Willamette

N.F.

Deschutes

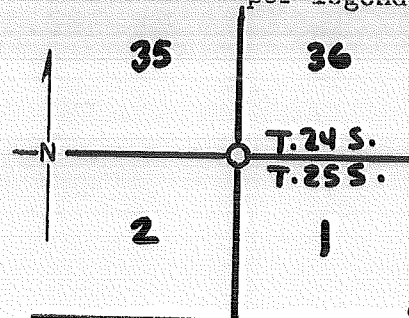
State

Oregon

Section

1

CORNER DIAGRAM per legend



DESCRIBE CORNER MONUMENT FOUND

SFNF

FOUND STONE MOUNDS, BUT NO MARKINGS ON STONES.

DESCRIBE BEARING TREES OR OTHER OFFICIAL ACCESSORIES FOUND

PHOTO IDENTIFICATION DATA

Photo No.

Filed At

Object Ident.

Ident. By

Signature

DESCRIBE CORNER LOCATION RELATIVE TO NEAR-BY FEATURES, ALSO HOW TO REACH CORNER

PACE/COMPASS FROM SEC COR TO THE NORTH.

CORNER LEGEND:

FS or Unverified

Contr. Other



Searched For/Not Found



Evidence Found/Accept.



Permanent Mon. Set/Fd.

Searched By:

STEVE CHAMBERLIN

Title

ST SO

Division

Headquarters

BEND

Date

7-28-83

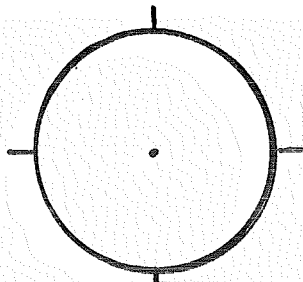


CORNER RECORD (PERPETUATION)

MONUMENT: DESCRIBE NEW MONUMENT SET, OR WORK DONE TO PRESERVE EXISTING MONUMENT

\_\_\_\_\_  
\_\_\_\_\_  
\_\_\_\_\_

MONUMENT STAMPED



9

ACCESSORIES: DESCRIBE NEW BT'S WITNESS OBJECTS ETC. ESTABLISHED, OR WORK DONE TO PRESERVE EXISTING EVIDENCE

\_\_\_\_\_  
\_\_\_\_\_  
\_\_\_\_\_

10

Work Done By \_\_\_\_\_ Title \_\_\_\_\_ Date \_\_\_\_\_ State Registration No. or Agency \_\_\_\_\_

Plat or Certified Cor. Record Prepared? Yes No Filed At: \_\_\_\_\_ Co. Surveyor's Office Date \_\_\_\_\_

11

History  
of  
Surveys,  
G.L.O.,  
etc.

\_\_\_\_\_  
\_\_\_\_\_  
\_\_\_\_\_

12

Index File No. \_\_\_\_\_ T. S., R. E., W.M. \_\_\_\_\_ Contract or Surv. No. \_\_\_\_\_ Cor. \_\_\_\_\_

2175

2-21

13